



WORLD HERITAGE

Frontiers of the Roman Empire – The Danube Limes (Western Segment) (1608rev)

Oberranna

-  Boundaries of the WH property
-  Buffer zones of the WH property

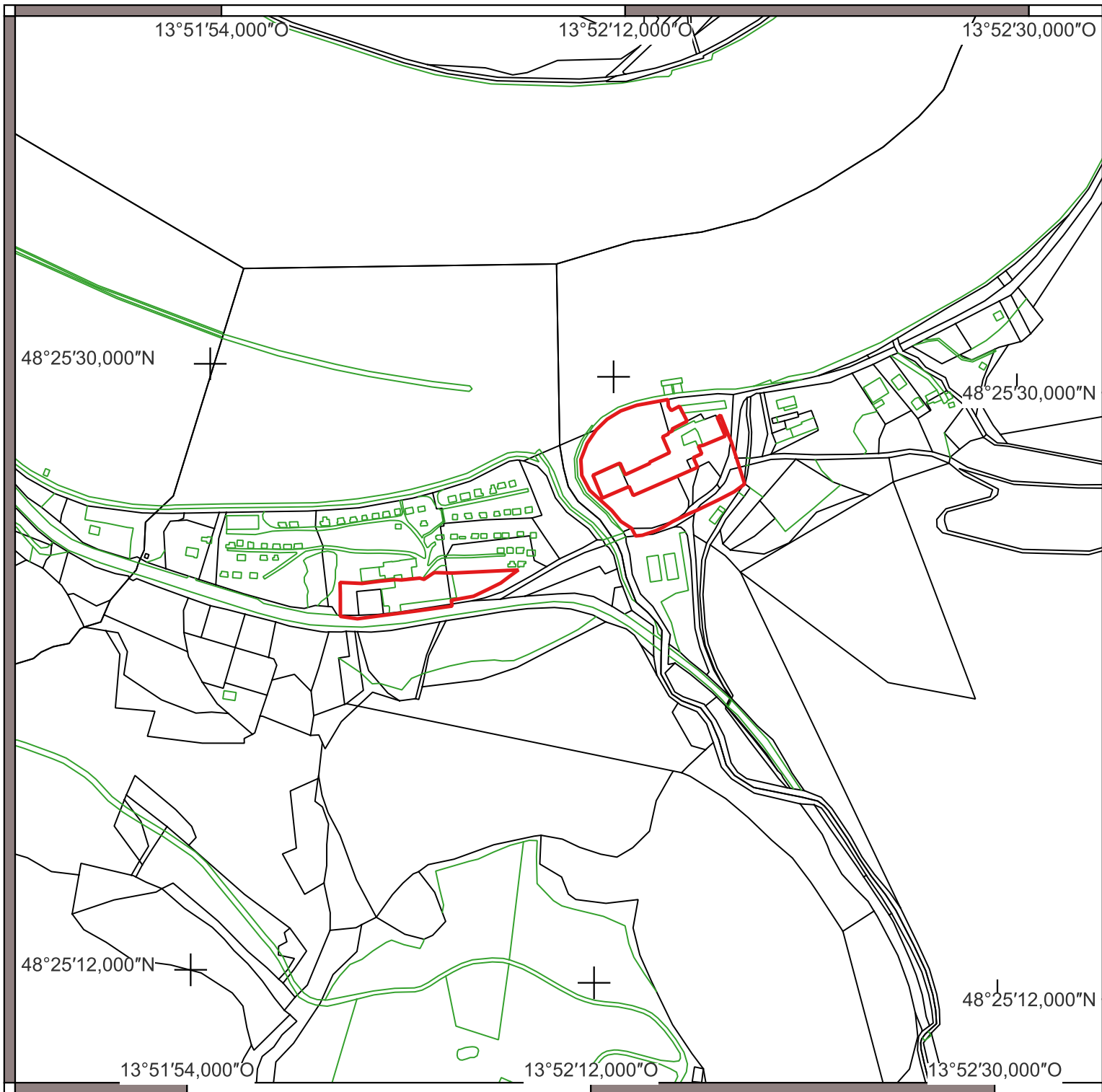
Area of the WH property (Austria):
711.74 ha
Area of the WH buffer zones (Austria):
1,065.83 ha

Scale (large map): 1:5,000

Coordinate system:
EPSG: 31259
MGI / Austria GK M34

Base map:
© Bundesamt für Eich- und Vermessungswesen (BEV), Digital Cadastral Map (DKM), CC-BY-4.0

Cartography:
schimek plant, DI Michael Schimek, MA
A-3430 Tulln



WORLD HERITAGE

Frontiers of the Roman Empire – The Danube Limes (Western Segment) (1608rev)

Schlögen

- Boundaries of the WH property
- Buffer zones of the WH property

Area of the WH property (Austria):
711.74 ha

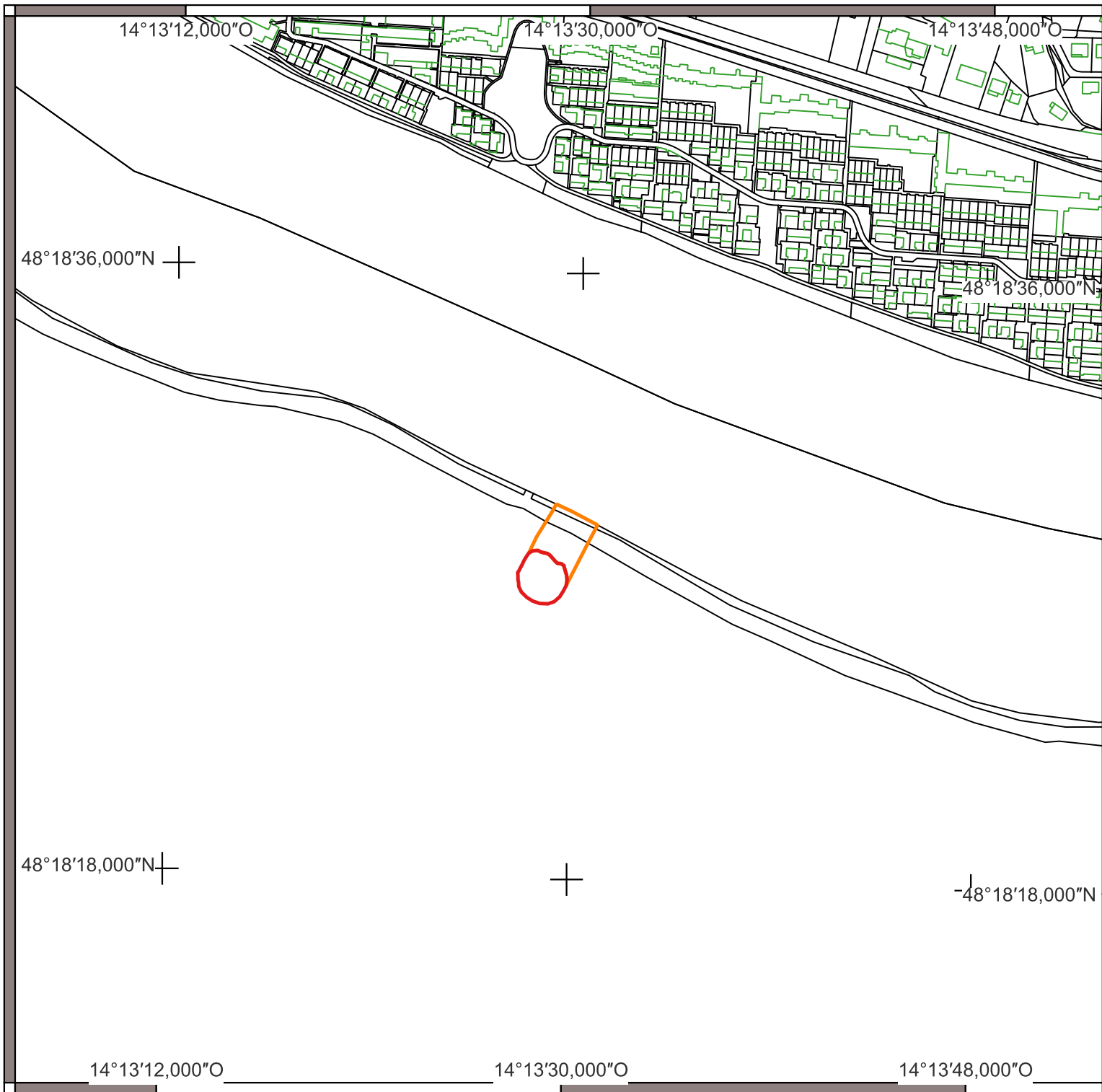
Area of the WH buffer zones (Austria):
1,065.83 ha

Scale (large map): 1:5,000

Coordinate system:
EPSG: 31259
MGI / Austria GK M34

Base map:
© Bundesamt für Eich- und Vermessungswesen (BEV), Digital Cadastral Map (DKM), CC-BY-4.0

Cartography:
schimek plant, DI Michael Schimek, MA
A-3430 Tulln



WORLD HERITAGE

Frontiers of the Roman Empire – The Danube Limes (Western Segment) (1608rev)

Wilhering

- Boundaries of the WH property
- Buffer zones of the WH property

Area of the WH property (Austria):
711.74 ha

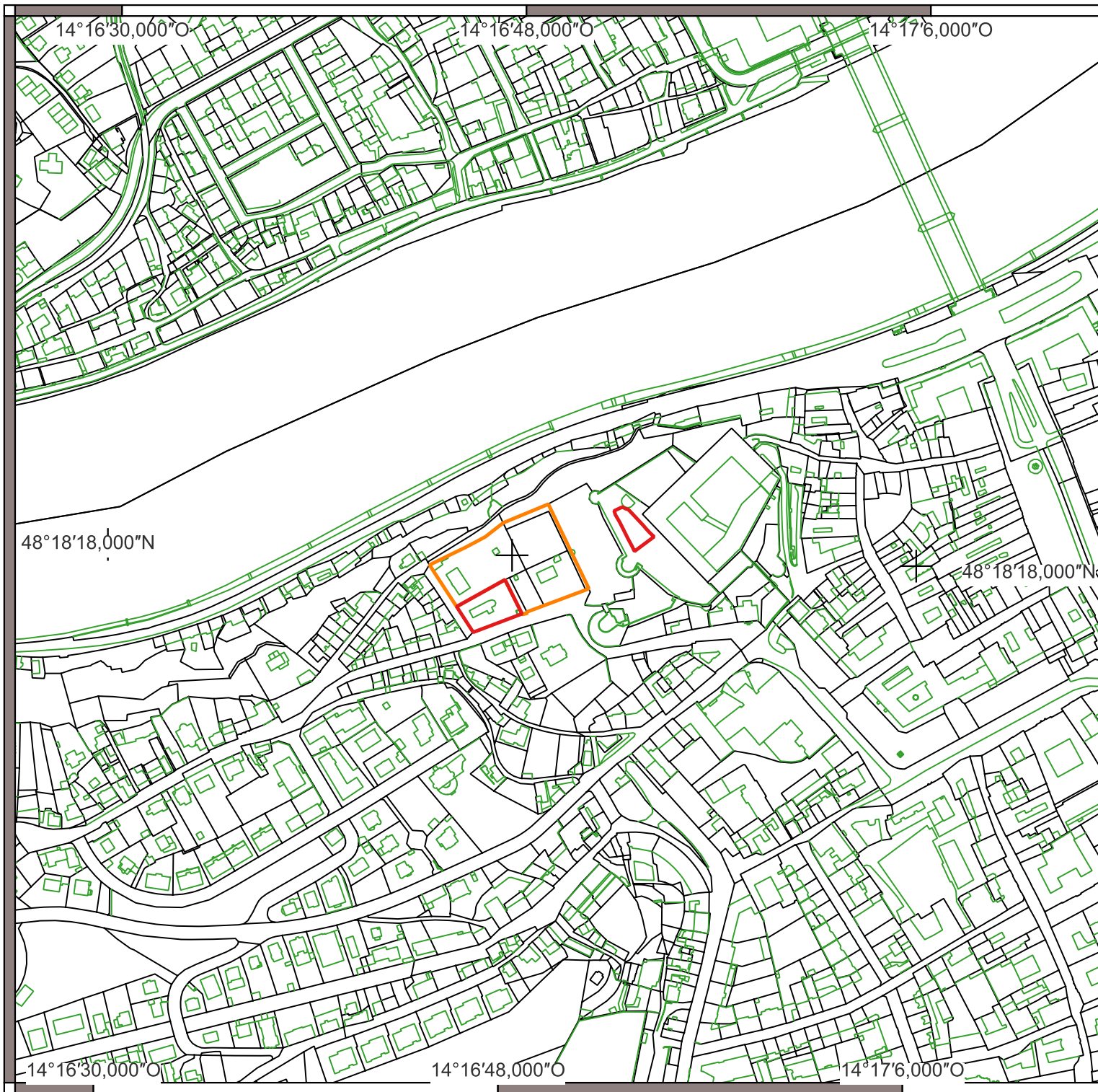
Area of the WH buffer zones (Austria):
1,065.83 ha

Scale (large map): 1:5,000

Coordinate system:
EPSG: 31259
MGI / Austria GK M34

Base map:
© Bundesamt für Eich- und Vermessungswesen (BEV), Digital Cadastral Map (DKM), CC-BY-4.0



Cartography:
schimek plant, DI Michael Schimek, MA
A-3430 Tulln



WORLD HERITAGE

Frontiers of the Roman Empire – The Danube Limes (Western Segment) (1608rev)

Linz

-  Boundaries of the WH property
-  Buffer zones of the WH property

Area of the WH property (Austria):
711.74 ha

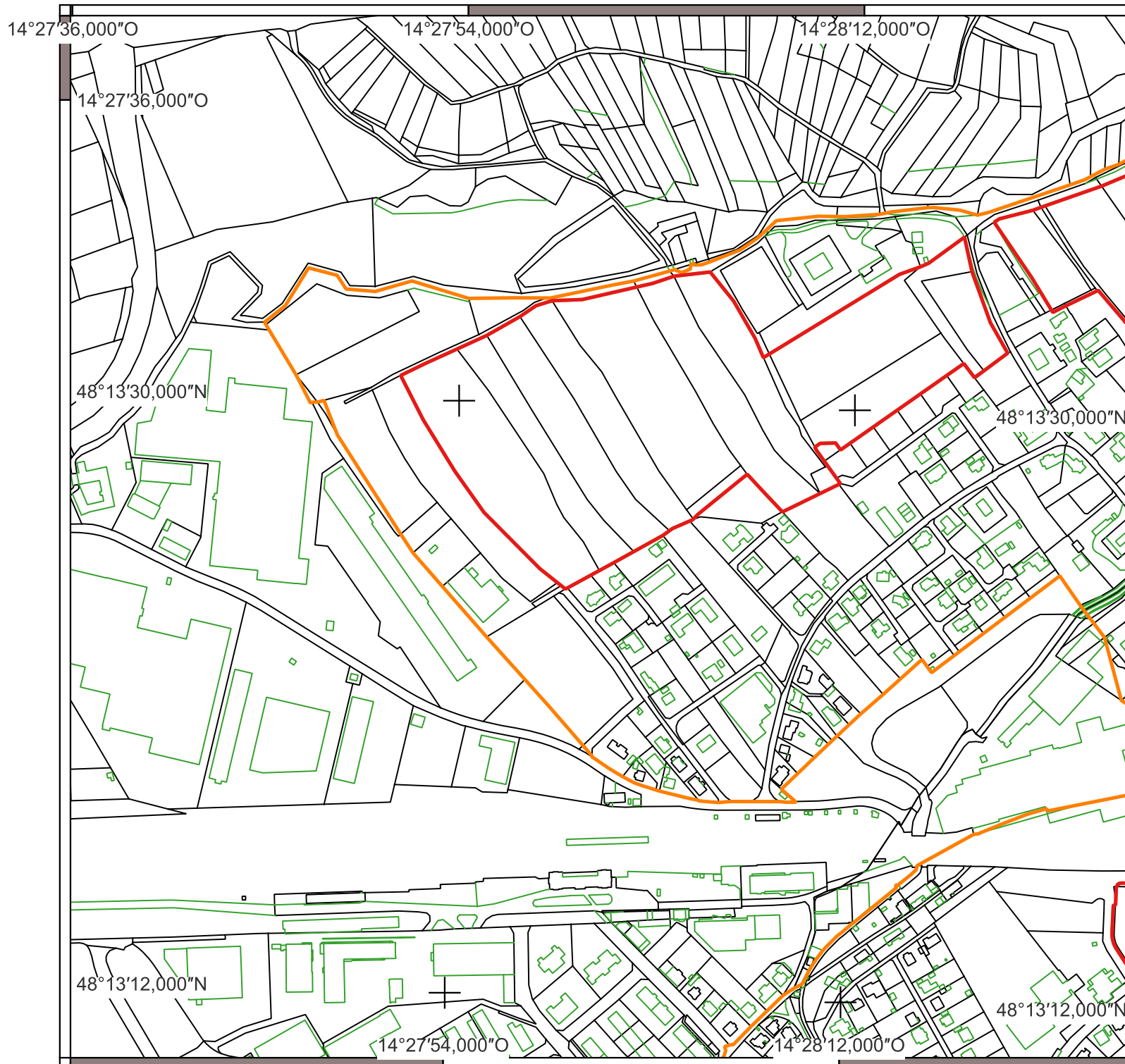
Area of the WH buffer zones (Austria):
1,065.83 ha

Scale (large map): 1:5,000

Coordinate system:
EPSG: 31259
MGI / Austria GK M34

Base map:
© Bundesamt für Eich- und Vermessungswesen (BEV), Digital Cadastral Map (DKM), CC-BY-4.0



Cartography:
schimek plant, DI Michael Schimek, MA
A-3430 Tulln



WORLD HERITAGE

Frontiers of the Roman Empire – The Danube Limes (Western Segment) (1608rev)

Enns 1/4

-  Boundaries of the WH property
-  Buffer zones of the WH property

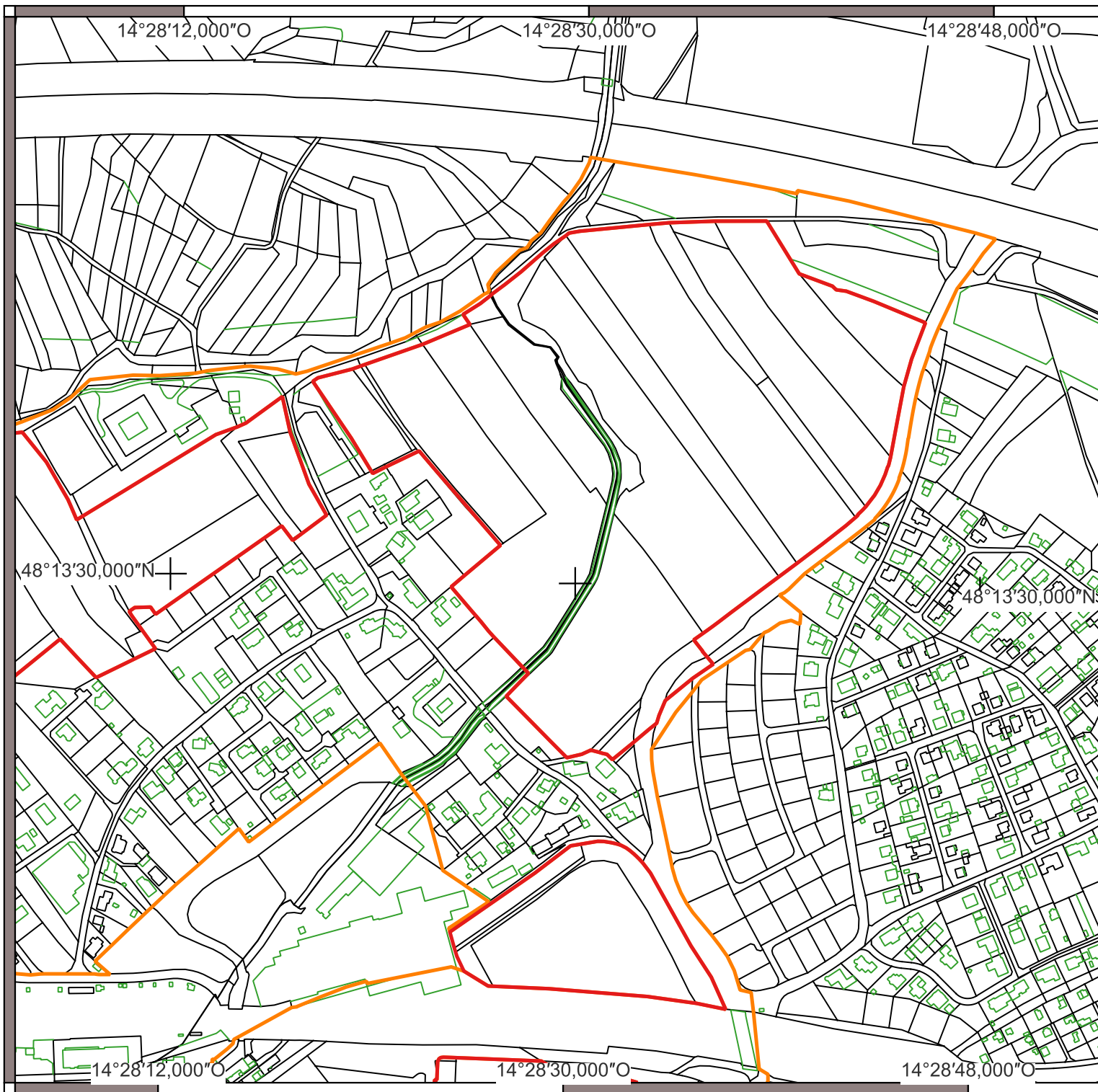
Area of the WH property (Austria):
711.74 ha
Area of the WH buffer zones (Austria):
1,065.83 ha

Scale (large map): 1:5,000

Coordinate system:
EPSG: 31259
MGI / Austria GK M34

Base map:
© Bundesamt für Eich- und Vermessungswesen (BEV), Digital Cadastral Map (DKM), CC-BY-4.0



Cartography:
schimek plant, DI Michael Schimek, MA
A-3430 Tulln



WORLD HERITAGE

Frontiers of the Roman Empire – The Danube Limes (Western Segment) (1608rev)

Enns 2/4

-  Boundaries of the WH property
-  Buffer zones of the WH property

Area of the WH property (Austria):
711.74 ha

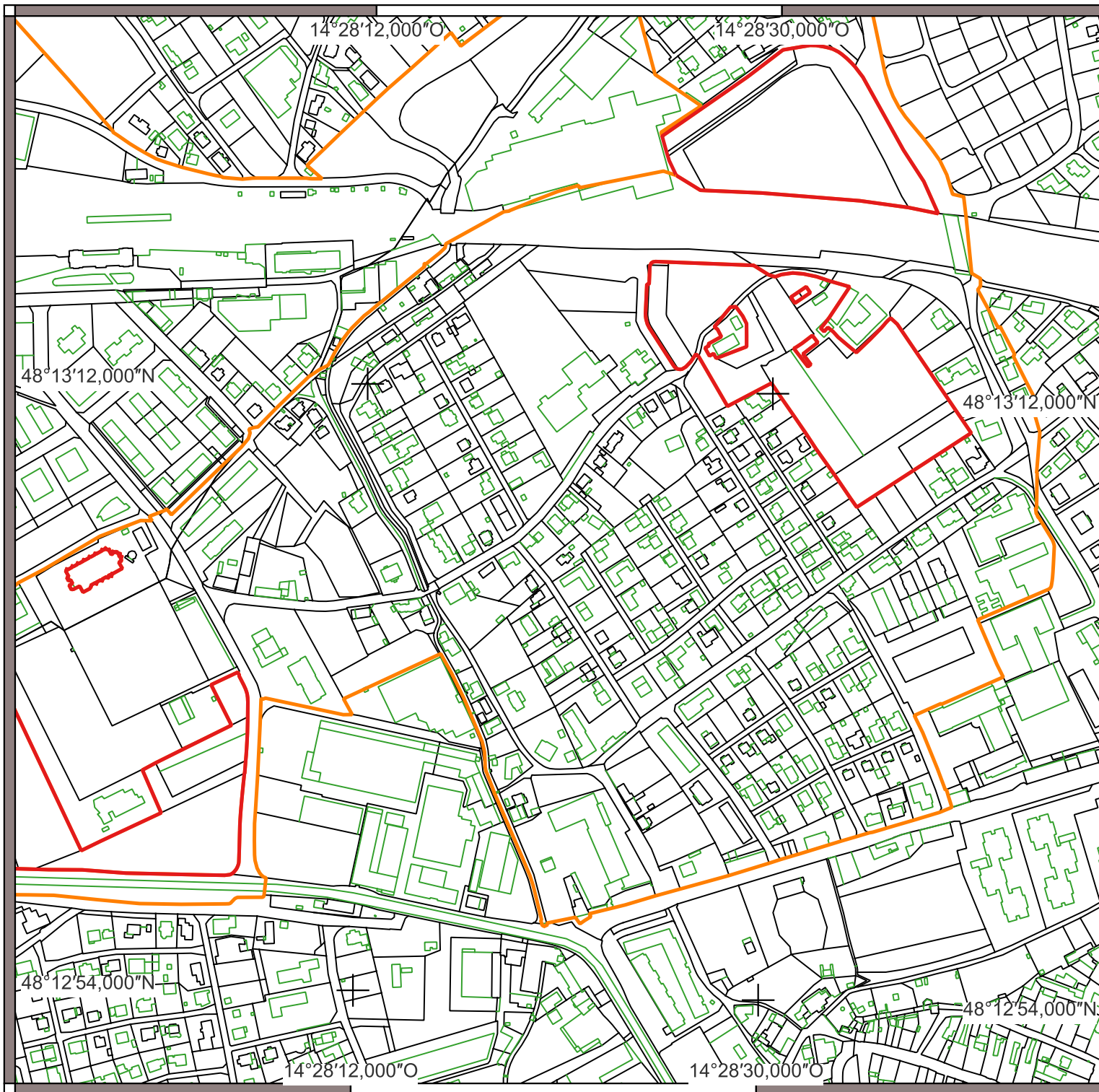
Area of the WH buffer zones (Austria):
1,065.83 ha

Scale (large map): 1:5,000

Coordinate system:
EPSG: 31259
MGI / Austria GK M34

Base map:
© Bundesamt für Eich- und Vermessungswesen (BEV), Digital Cadastral Map (DKM), CC-BY-4.0



Cartography:
schimek plant, DI Michael Schimek, MA
A-3430 Tulln



WORLD HERITAGE

Frontiers of the Roman Empire – The Danube Limes (Western Segment) (1608rev)

Enns 3/4

-  Boundaries of the WH property
-  Buffer zones of the WH property

Area of the WH property (Austria):
711.74 ha

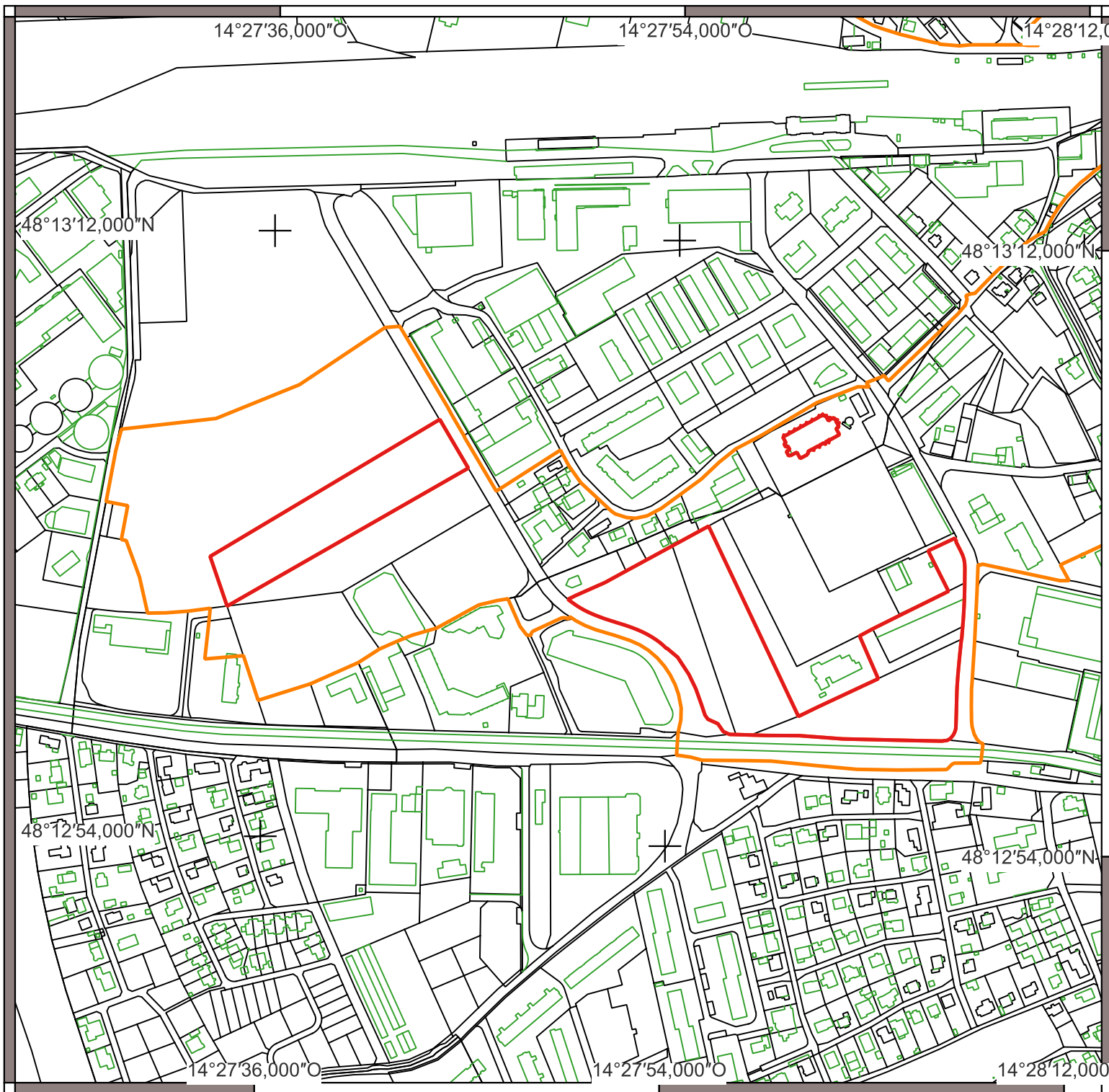
Area of the WH buffer zones (Austria):
1,065.83 ha

Scale (large map): 1:5,000

Coordinate system:
EPSG: 31259
MGI / Austria GK M34

Base map:
© Bundesamt für Eich- und Vermessungswesen (BEV), Digital Cadastral Map (DKM), CC-BY-4.0



Cartography:
schimek plant, DI Michael Schimek, MA
A-3430 Tulln



WORLD HERITAGE

Frontiers of the Roman Empire – The Danube Limes (Western Segment) (1608rev)

Enns 4/4

-  Boundaries of the WH property
-  Buffer zones of the WH property

Area of the WH property (Austria):
711.74 ha

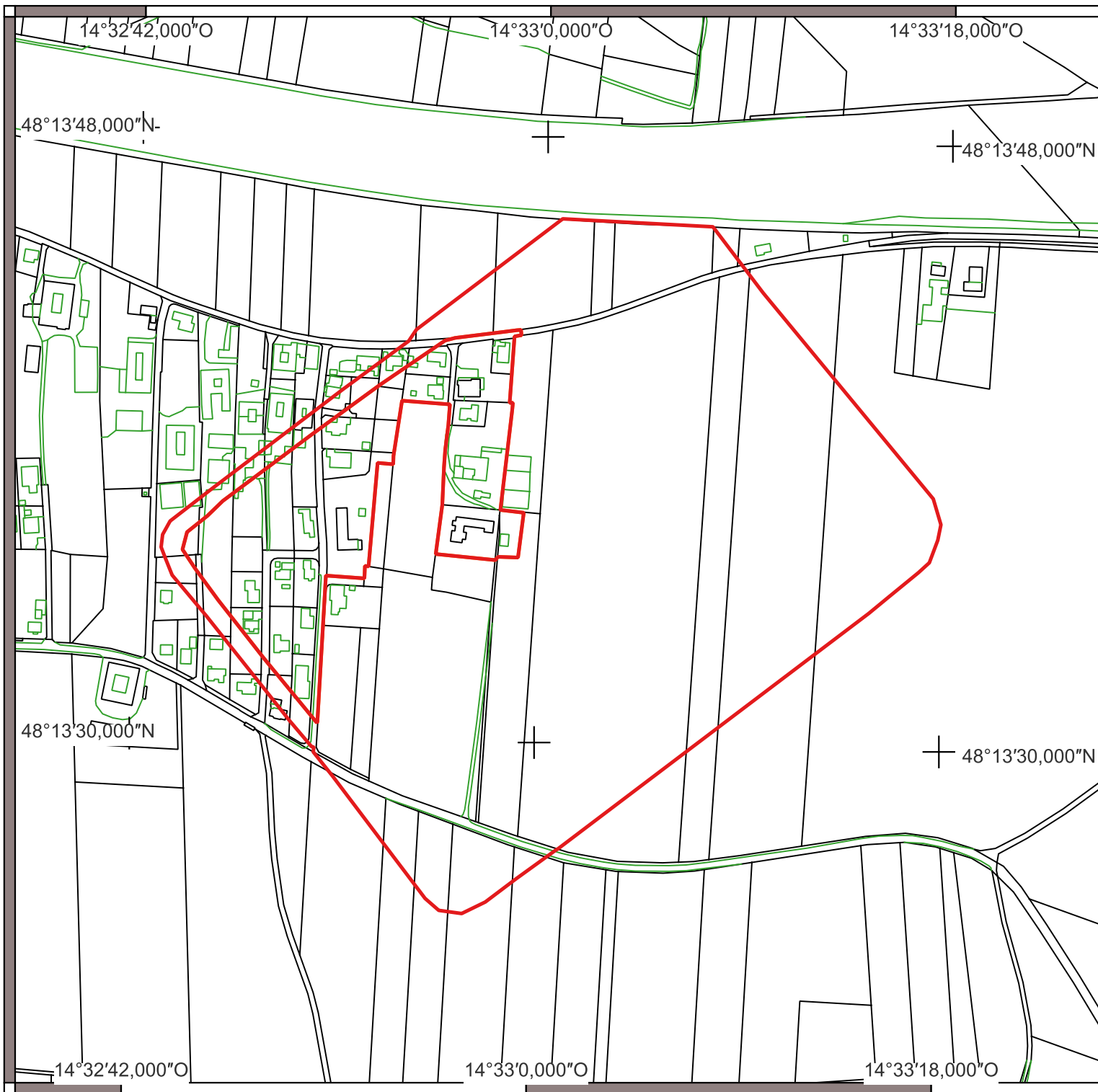
Area of the WH buffer zones (Austria):
1,065.83 ha

Scale (large map): 1:5,000

Coordinate system:
EPSG: 31259
MGI / Austria GK M34

Base map:
© Bundesamt für Eich- und Vermessungswesen (BEV), Digital Cadastral Map (DKM), CC-BY-4.0



Cartography:
schimek plant, DI Michael Schimek, MA
A-3430 Tulln



WORLD HERITAGE

Frontiers of the Roman Empire – The Danube Limes (Western Segment) (1608rev)

Albing

-  Boundaries of the WH property
-  Buffer zones of the WH property

Area of the WH property (Austria):
711.74 ha

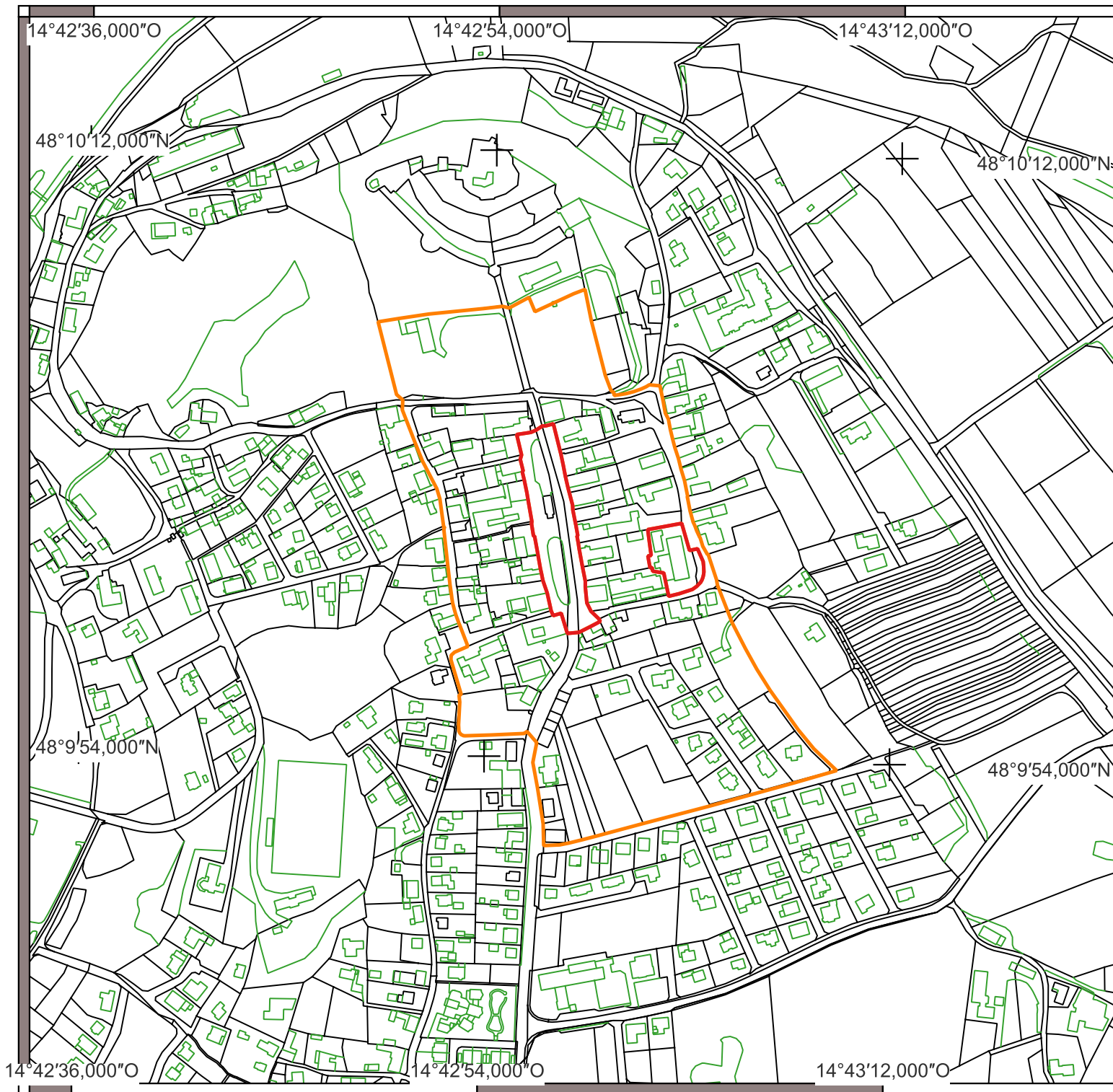
Area of the WH buffer zones (Austria):
1,065.83 ha

Scale (large map): 1:5,000

Coordinate system:
EPSG: 31259
MGI / Austria GK M34

Base map:
© Bundesamt für Eich- und Vermessungswesen (BEV), Digital Cadastral Map (DKM), CC-BY-4.0



Cartography:
schimek plant, DI Michael Schimek, MA
A-3430 Tulln



WORLD HERITAGE

Frontiers of the Roman Empire – The Danube Limes (Western Segment) (1608rev)

Wallsee

-  Boundaries of the WH property
-  Buffer zones of the WH property

Area of the WH property (Austria):
711.74 ha

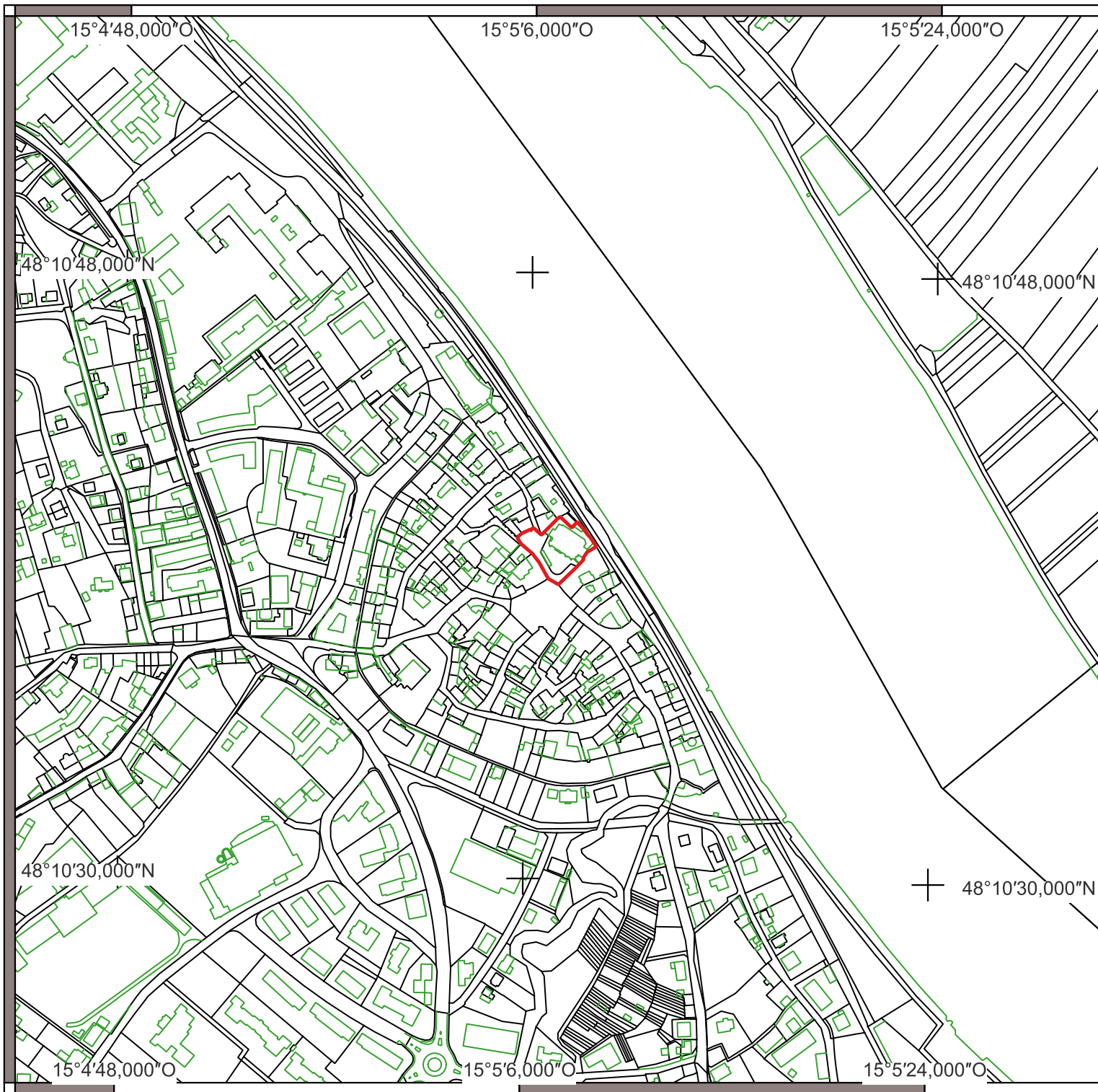
Area of the WH buffer zones (Austria):
1,065.83 ha

Scale (large map): 1:5,000

Coordinate system:
EPSG: 31259
MGI / Austria GK M34

Base map:
© Bundesamt für Eich- und Vermessungswesen (BEV), Digital Cadastral Map (DKM), CC-BY-4.0



Cartography:
schimek plant, DI Michael Schimek, MA
A-3430 Tulln



WORLD HERITAGE

Frontiers of the Roman Empire – The Danube Limes (Western Segment) (1608rev)

Ybbs

-  Boundaries of the WH property
-  Buffer zones of the WH property

Area of the WH property (Austria):
711.74 ha

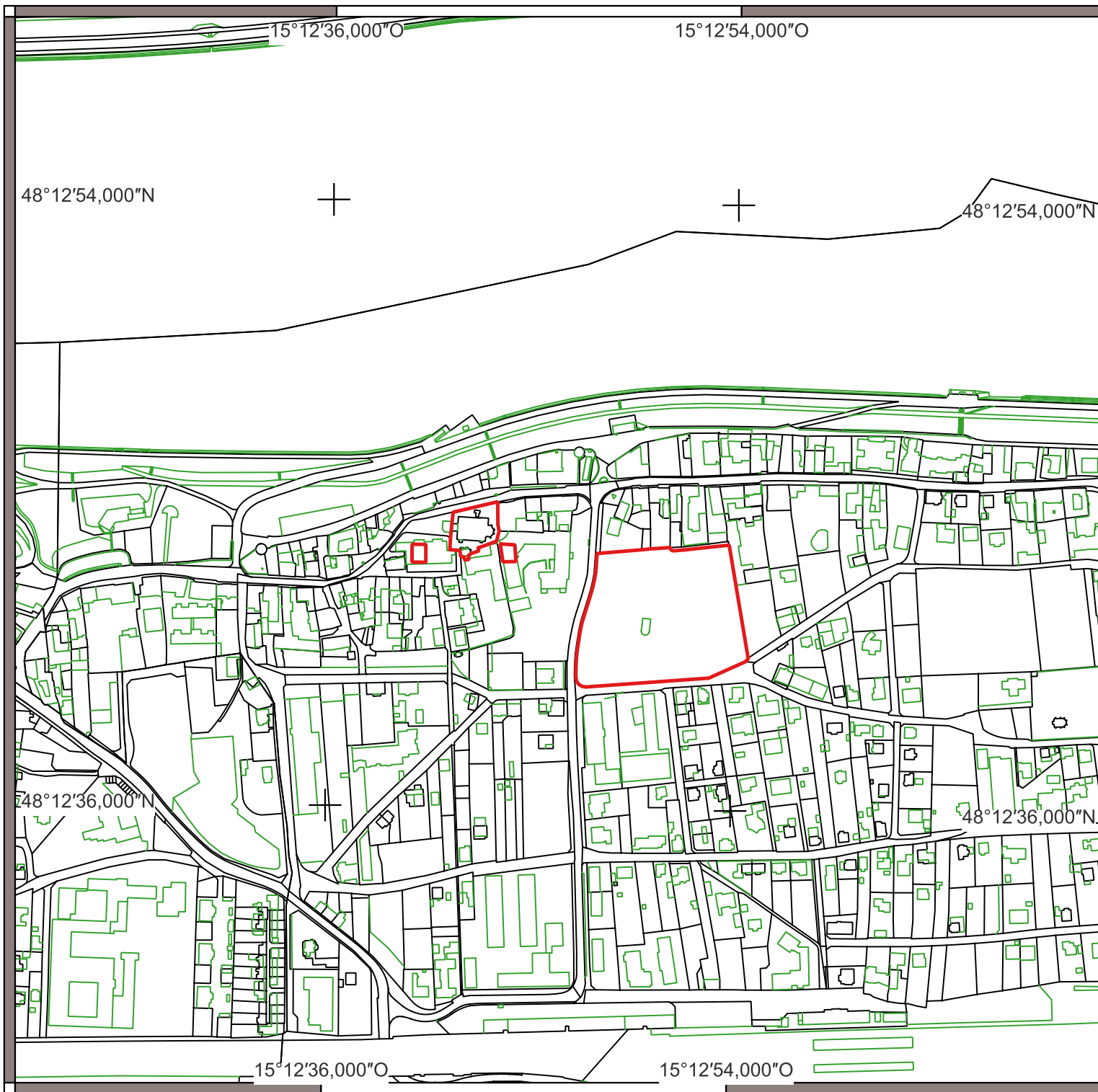
Area of the WH buffer zones (Austria):
1,065.83 ha

Scale (large map): 1:5,000

Coordinate system:
EPSG: 31259
MGI / Austria GK M34

Base map:
© Bundesamt für Eich- und Vermessungswesen (BEV), Digital Cadastral Map (DKM), CC-BY-4.0



Cartography:
schimek plant, DI Michael Schimek, MA
A-3430 Tulln



WORLD HERITAGE

Frontiers of the Roman Empire – The Danube Limes (Western Segment) (1608rev)

Pöchlarn

-  Boundaries of the WH property
-  Buffer zones of the WH property

Area of the WH property (Austria):
711.74 ha

Area of the WH buffer zones (Austria):
1,065.83 ha

Scale (large map): 1:5,000

Coordinate system:

EPSG: 31259

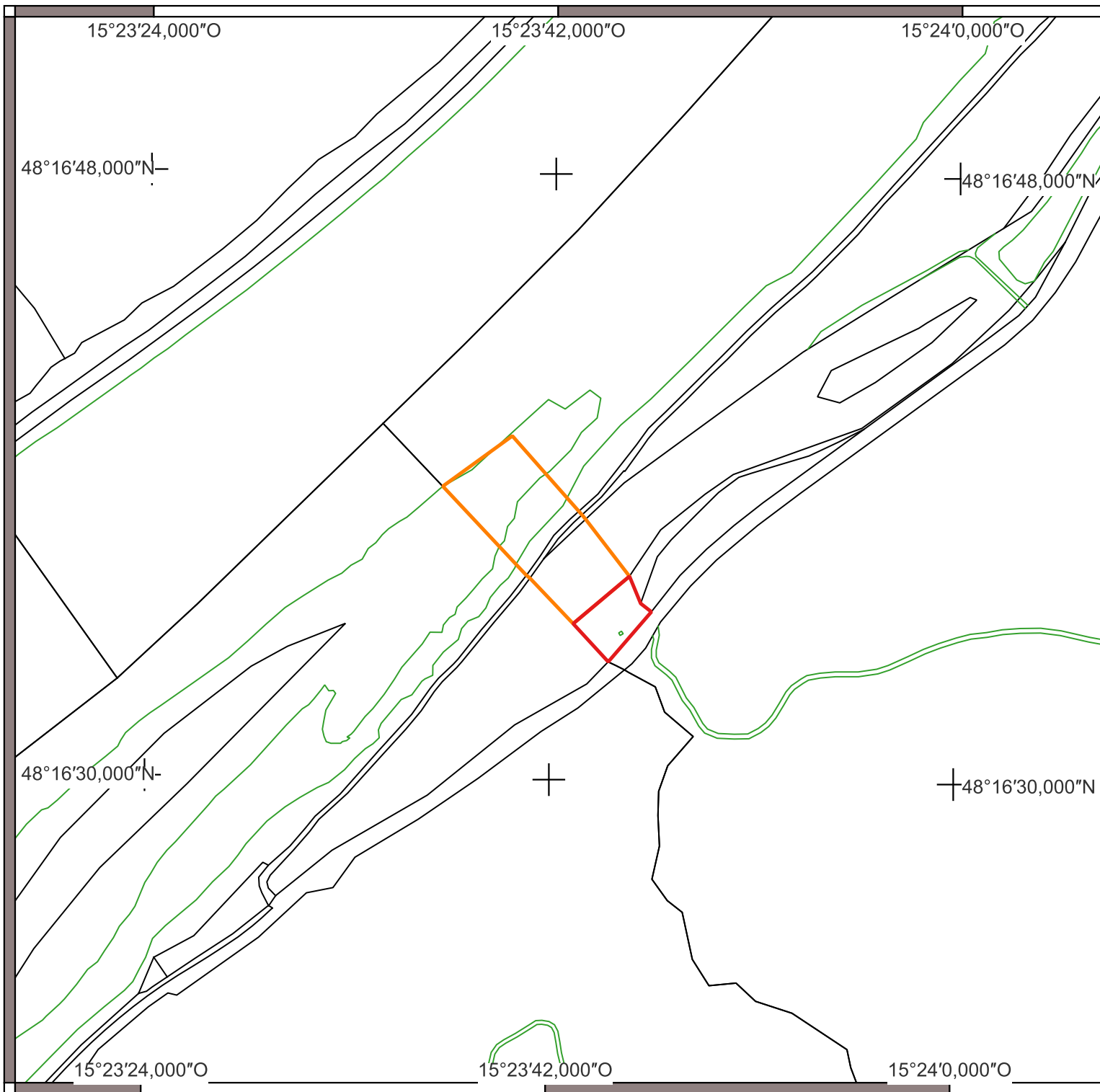
MGI / Austria GK M34

Base map:

© Bundesamt für Eich- und Vermessungswesen (BEV), Digital Cadastral Map (DKM), CC-BY-4.0

Cartography:



schimek plant, DI Michael Schimek, MA
A-3430 Tulln



WORLD HERITAGE

Frontiers of the Roman Empire – The Danube Limes (Western Segment) (1608rev)

Blashausgraben

-  Boundaries of the WH property
-  Buffer zones of the WH property

Area of the WH property (Austria):
711.74 ha

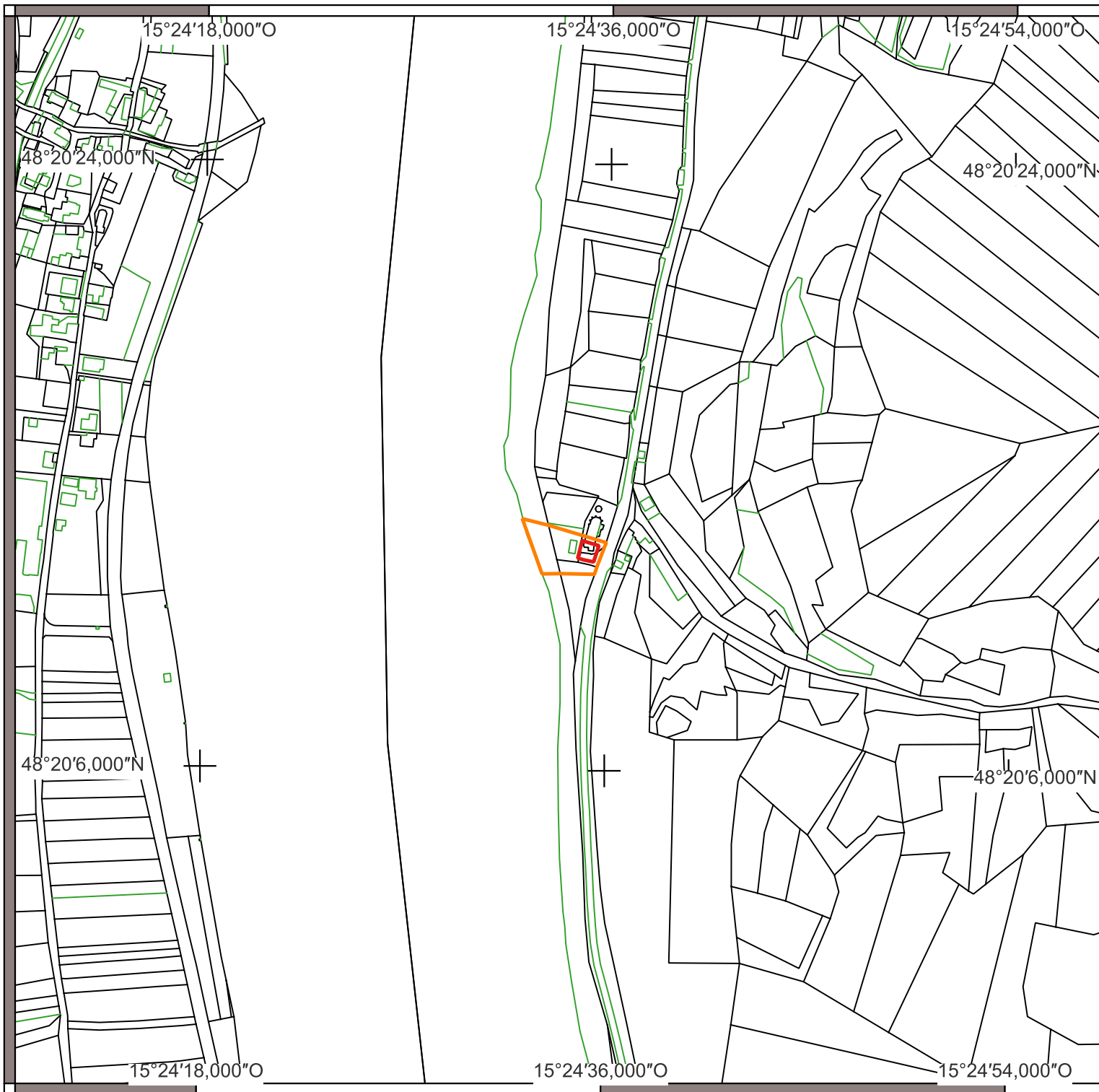
Area of the WH buffer zones (Austria):
1,065.83 ha

Scale (large map): 1:5,000

Coordinate system:
EPSG: 31259
MGI / Austria GK M34

Base map:
© Bundesamt für Eich- und Vermessungswesen (BEV), Digital Cadastral Map (DKM), CC-BY-4.0

Cartography:
schimek plant, DI Michael Schimek, MA
A-3430 Tulln



WORLD HERITAGE

Frontiers of the Roman Empire – The Danube Limes (Western Segment) (1608rev)

St. Johann

- Boundaries of the WH property
- Buffer zones of the WH property

Area of the WH property (Austria):
711.74 ha

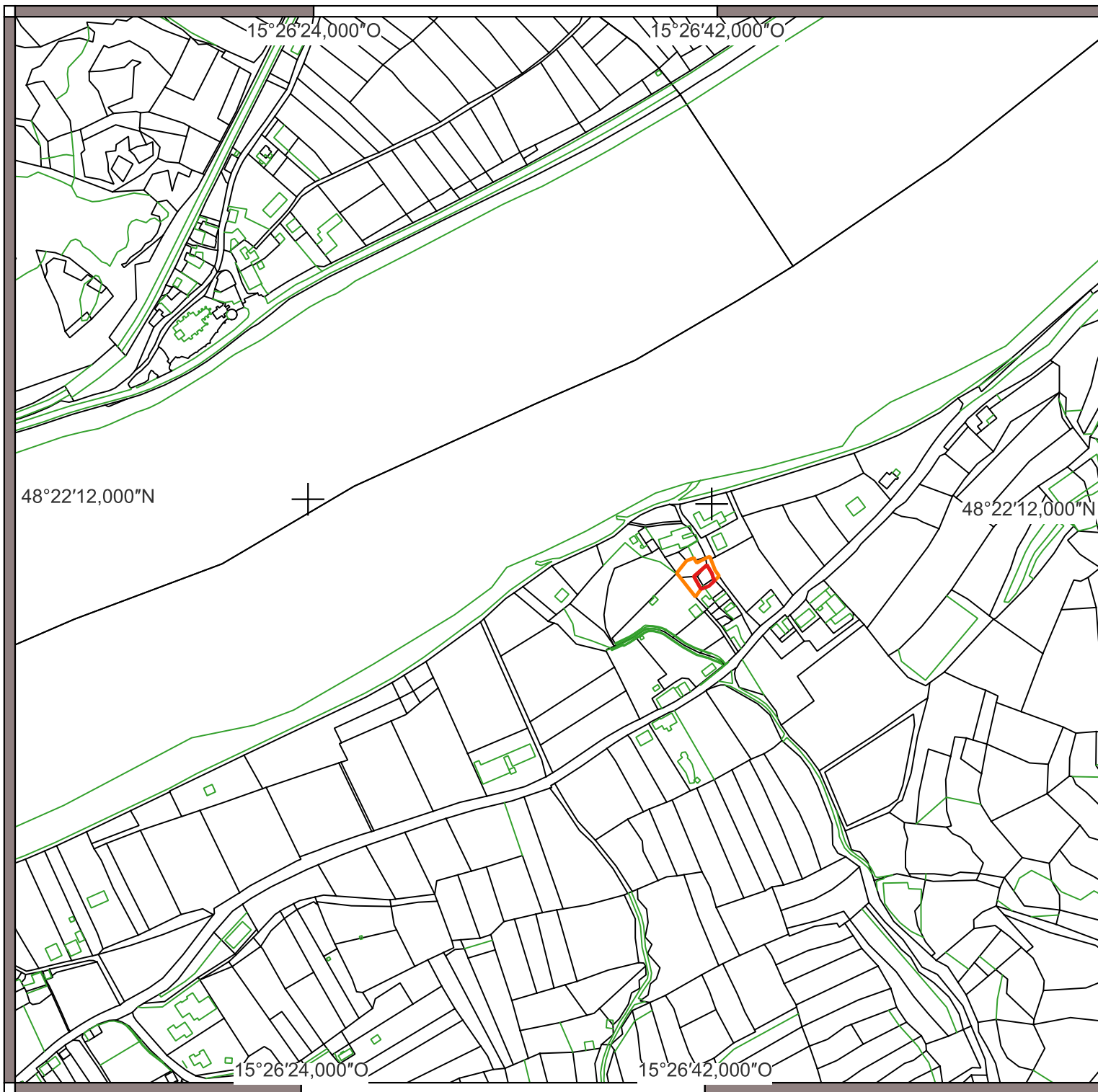
Area of the WH buffer zones (Austria):
1,065.83 ha

Scale (large map): 1:5,000

Coordinate system:
EPSG: 31259
MGI / Austria GK M34

Base map:
© Bundesamt für Eich- und Vermessungswesen (BEV), Digital Cadastral Map (DKM), CC-BY-4.0



Cartography:
schimek plant, DI Michael Schimek, MA
A-3430 Tulln



WORLD HERITAGE

Frontiers of the Roman Empire – The Danube Limes (Western Segment) (1608rev)

Bacharnsdorf

-  Boundaries of the WH property
-  Buffer zones of the WH property

Area of the WH property (Austria):
711.74 ha

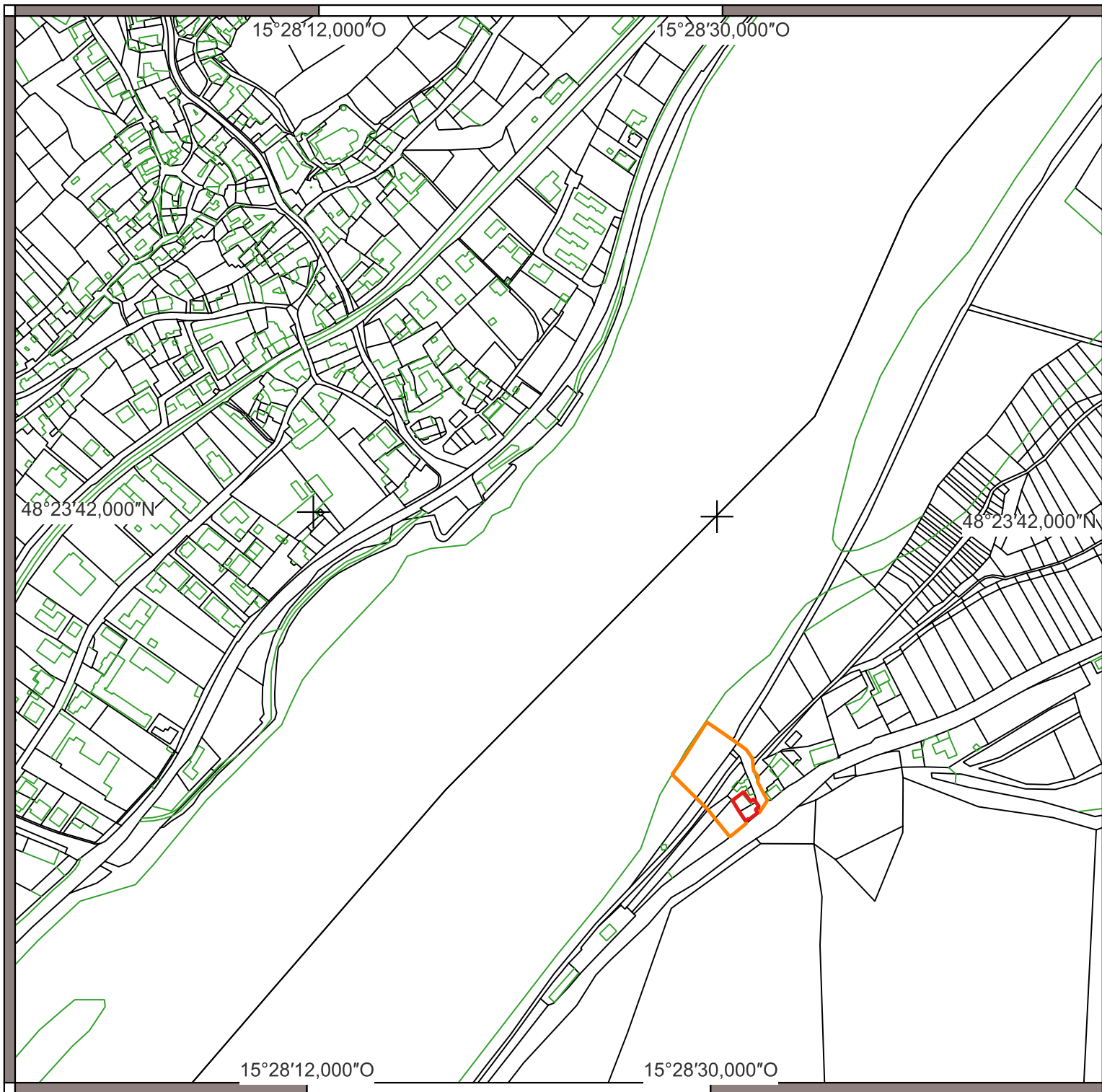
Area of the WH buffer zones (Austria):
1,065.83 ha

Scale (large map): 1:5,000

Coordinate system:
EPSG: 31259
MGI / Austria GK M34

Base map:
© Bundesamt für Eich- und Vermessungswesen (BEV), Digital Cadastral Map (DKM), CC-BY-4.0



Cartography:
schimek plant, DI Michael Schimek, MA
A-3430 Tulln



WORLD HERITAGE

Frontiers of the Roman Empire – The Danube Limes (Western Segment) (1608rev)

St. Lorenz

-  Boundaries of the WH property
-  Buffer zones of the WH property

Area of the WH property (Austria):
711.74 ha

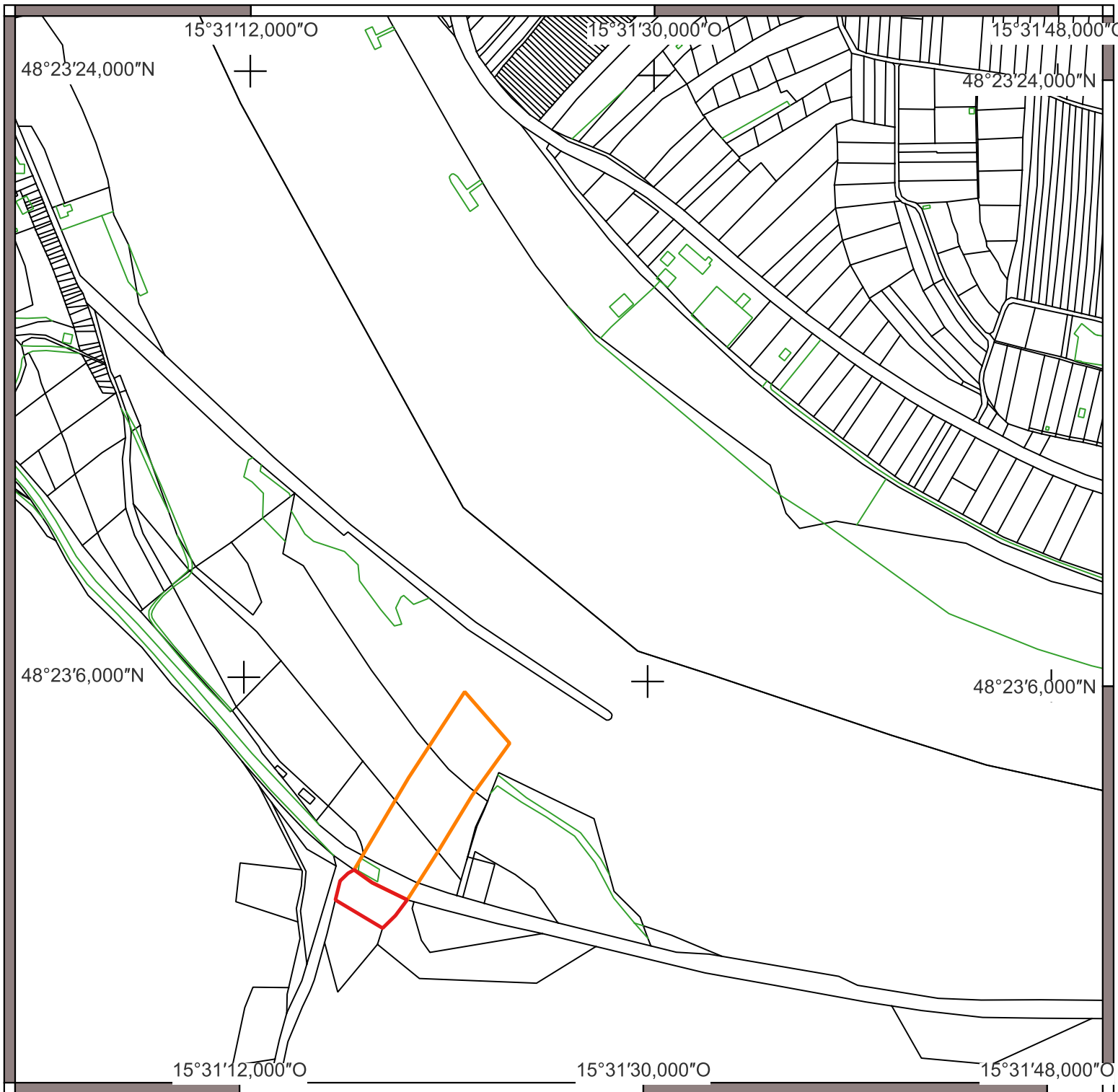
Area of the WH buffer zones (Austria):
1,065.83 ha

Scale (large map): 1:5,000

Coordinate system:
EPSG: 31259
MGI / Austria GK M34

Base map:
© Bundesamt für Eich- und Vermessungswesen (BEV), Digital Cadastral Map (DKM), CC-BY-4.0



Cartography:
schimek plant, DI Michael Schimek, MA
A-3430 Tulln



WORLD HERITAGE

Frontiers of the Roman Empire – The Danube Limes (Western Segment) (1608rev)

Windstallgraben

-  Boundaries of the WH property
-  Buffer zones of the WH property

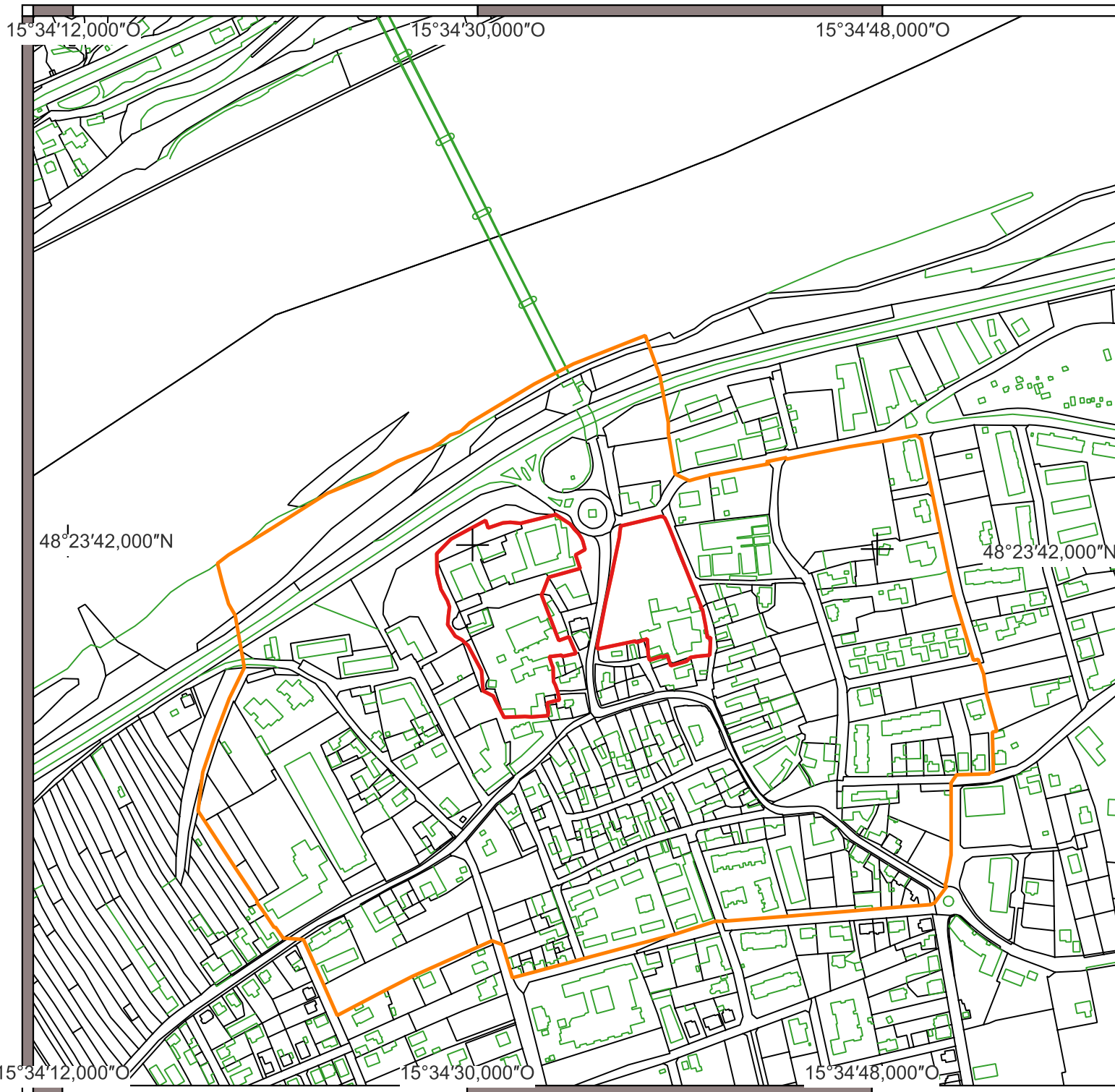
Area of the WH property (Austria):
711.74 ha
Area of the WH buffer zones (Austria):
1,065.83 ha

Scale (large map): 1:5,000

Coordinate system:
EPSG: 31259
MGI / Austria GK M34

Base map:
© Bundesamt für Eich- und Vermessungswesen (BEV), Digital Cadastral Map (DKM), CC-BY-4.0



Cartography:
schimek plant, DI Michael Schimek, MA
A-3430 Tulln



WORLD HERITAGE

Frontiers of the Roman Empire – The Danube Limes (Western Segment) (1608rev)

Mautern

-  Boundaries of the WH property
-  Buffer zones of the WH property

Area of the WH property (Austria):
711.74 ha

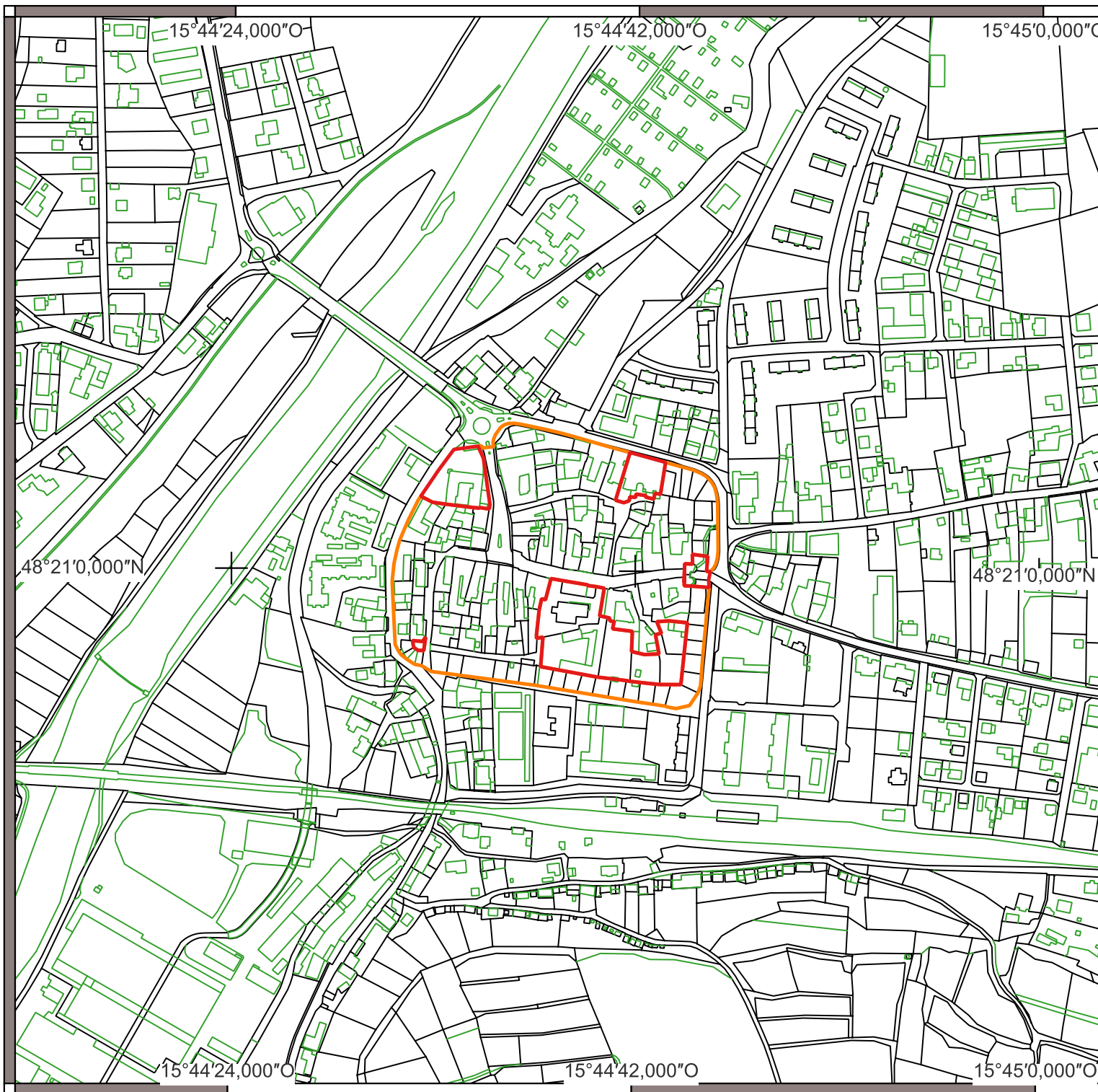
Area of the WH buffer zones (Austria):
1,065.83 ha

Scale (large map): 1:5,000

Coordinate system:
EPSG: 31259
MGI / Austria GK M34

Base map:
© Bundesamt für Eich- und Vermessungswesen (BEV), Digital Cadastral Map (DKM), CC-BY-4.0



Cartography:
schimek plant, DI Michael Schimek, MA
A-3430 Tulln



WORLD HERITAGE

Frontiers of the Roman Empire – The Danube Limes (Western Segment) (1608rev)

Trismauer

-  Boundaries of the WH property
-  Buffer zones of the WH property

Area of the WH property (Austria):
711.74 ha

Area of the WH buffer zones (Austria):
1,065.83 ha

Scale (large map): 1:5,000

Coordinate system:

EPSG: 31259

MGI / Austria GK M34

Base map:

© Bundesamt für Eich- und Vermessungswesen (BEV), Digital Cadastral Map (DKM), CC-BY-4.0

Cartography:



schimek plant, DI Michael Schimek, MA
A-3430 Tulln



WORLD HERITAGE

Frontiers of the Roman Empire – The Danube Limes (Western Segment) (1608rev)

Zwentendorf 1/3

-  Boundaries of the WH property
-  Buffer zones of the WH property

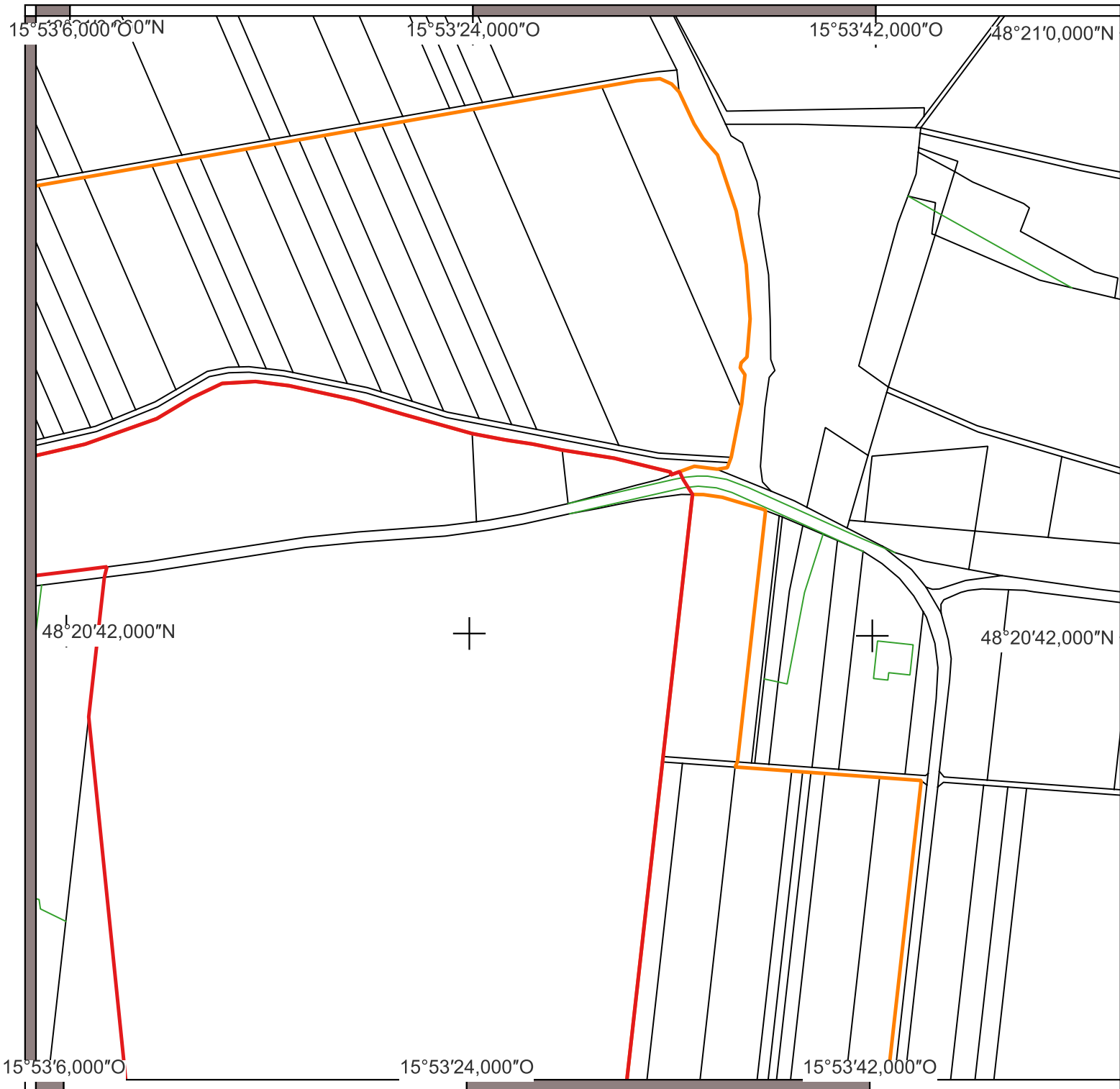
Area of the WH property (Austria):
711.74 ha
Area of the WH buffer zones (Austria):
1,065.83 ha

Scale (large map): 1:5,000

Coordinate system:
EPSG: 31259
MGI / Austria GK M34

Base map:
© Bundesamt für Eich- und Vermessungswesen (BEV), Digital Cadastral Map (DKM), CC-BY-4.0



Cartography:
schimek plant, DI Michael Schimek, MA
A-3430 Tulln



WORLD HERITAGE

Frontiers of the Roman Empire – The Danube Limes (Western Segment) (1608rev)

Zwentendorf 2/3

-  Boundaries of the WH property
-  Buffer zones of the WH property

Area of the WH property (Austria):
711.74 ha

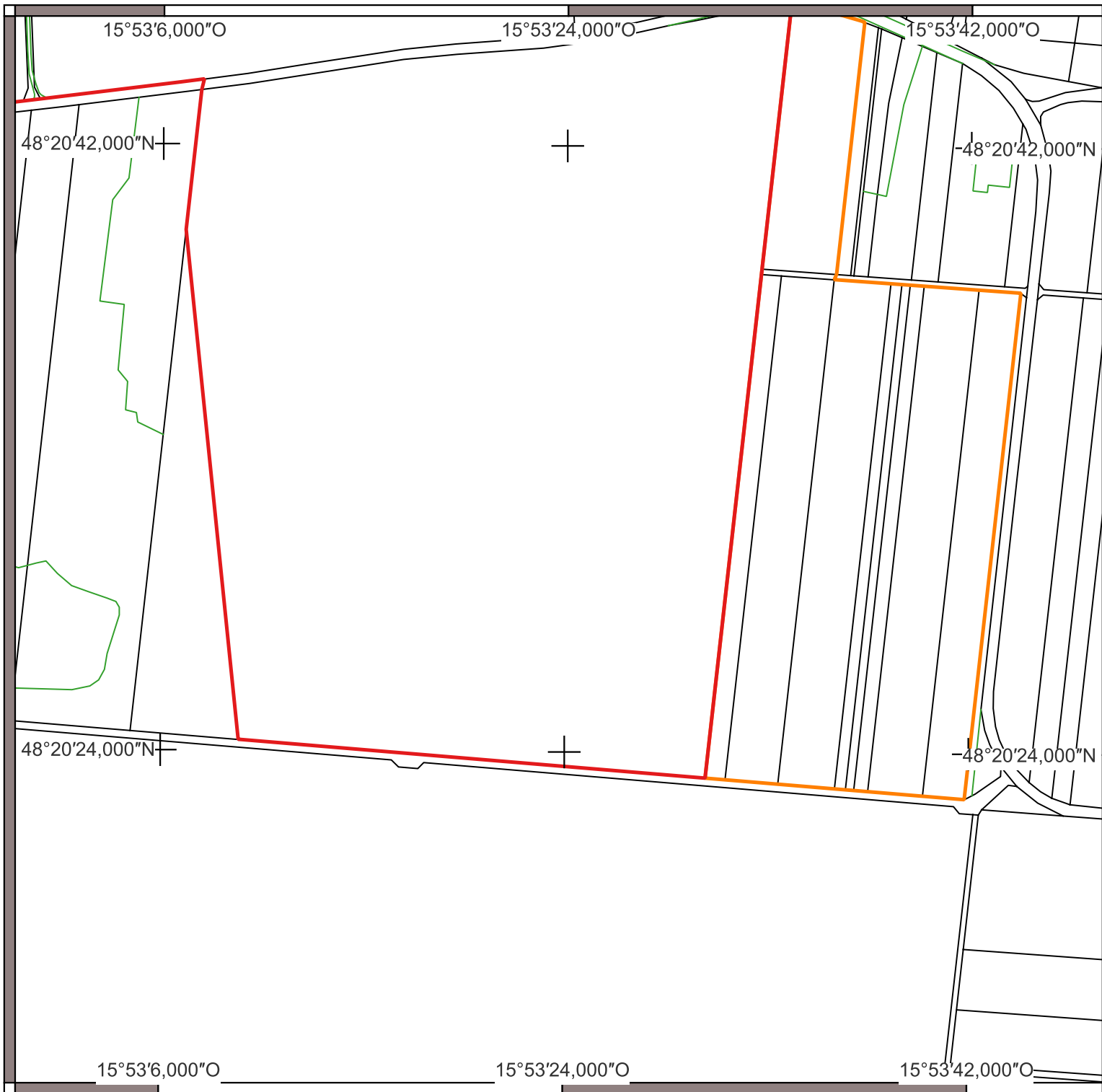
Area of the WH buffer zones (Austria):
1,065.83 ha

Scale (large map): 1:5,000

Coordinate system:
EPSG: 31259
MGI / Austria GK M34

Base map:
© Bundesamt für Eich- und Vermessungswesen (BEV), Digital Cadastral Map (DKM), CC-BY-4.0



Cartography:
schimek plant, DI Michael Schimek, MA
A-3430 Tulln



WORLD HERITAGE

Frontiers of the Roman Empire – The Danube Limes (Western Segment) (1608rev)

Zwentendorf 3/3

-  Boundaries of the WH property
-  Buffer zones of the WH property

Area of the WH property (Austria):

711.74 ha

Area of the WH buffer zones (Austria):

1,065.83 ha

Scale (large map): 1:5,000

Coordinate system:

EPSG: 31259

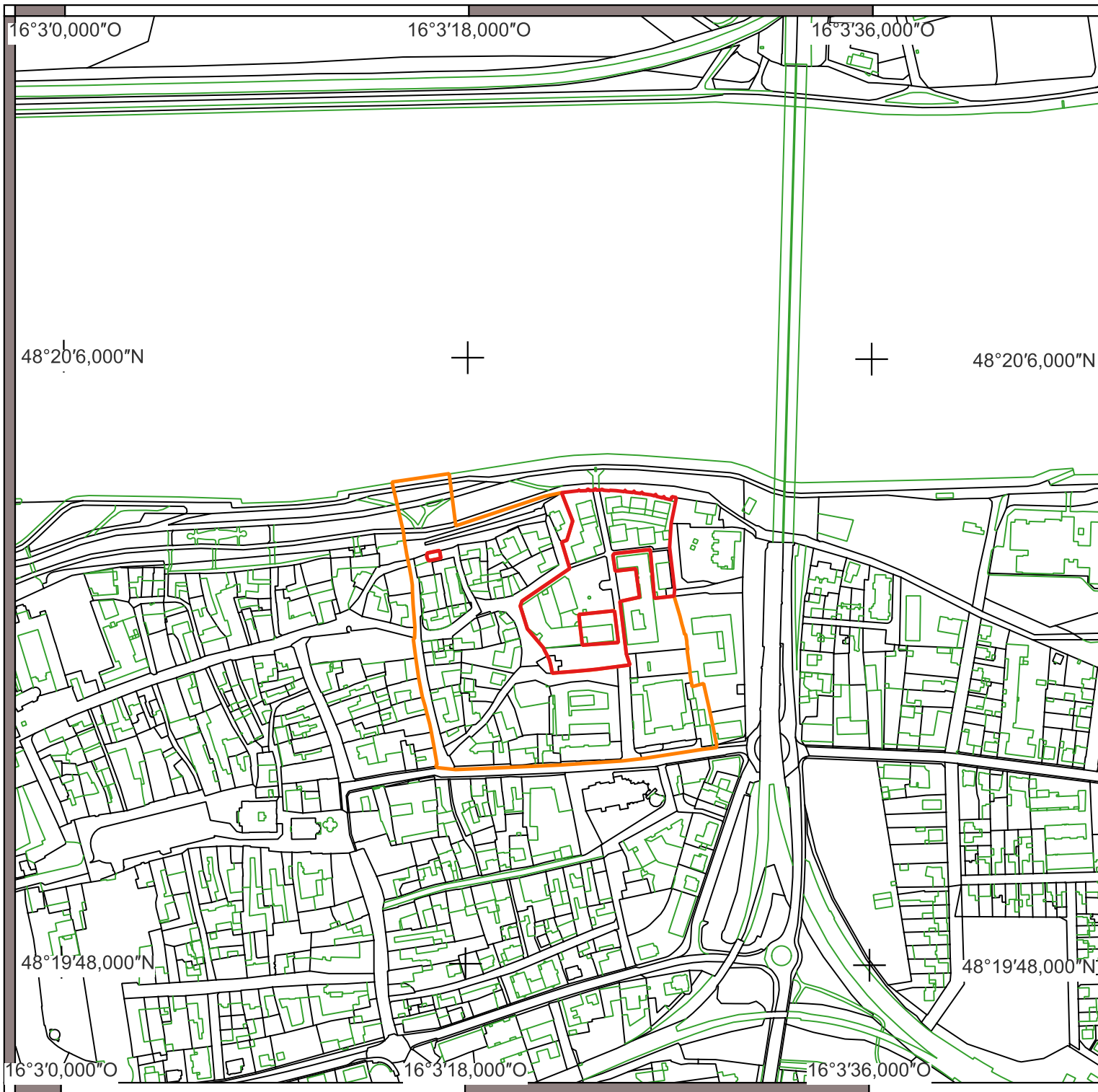
MGI / Austria GK M34

Base map:

© Bundesamt für Eich- und Vermessungswesen (BEV), Digital Cadastral Map (DKM), CC-BY-4.0

Cartography:

schimek plant, DI Michael Schimek, MA A-3430 Tulln



WORLD HERITAGE

Frontiers of the Roman Empire – The Danube Limes (Western Segment) (1608rev)

Tulln

- ▭ Boundaries of the WH property
- ▭ Buffer zones of the WH property

Area of the WH property (Austria):
711.74 ha

Area of the WH buffer zones (Austria):
1,065.83 ha

Scale (large map): 1:5,000

Coordinate system:
EPSG: 31259
MGI / Austria GK M34

Base map:
© Bundesamt für Eich- und Vermessungswesen (BEV), Digital Cadastral Map (DKM), CC-BY-4.0



Cartography:
schimek plant, DI Michael Schimek, MA
A-3430 Tulln



WORLD HERITAGE

Frontiers of the Roman Empire – The Danube Limes (Western Segment) (1608rev)

Zeiselmauer

-  Boundaries of the WH property
-  Buffer zones of the WH property

Area of the WH property (Austria):
711.74 ha

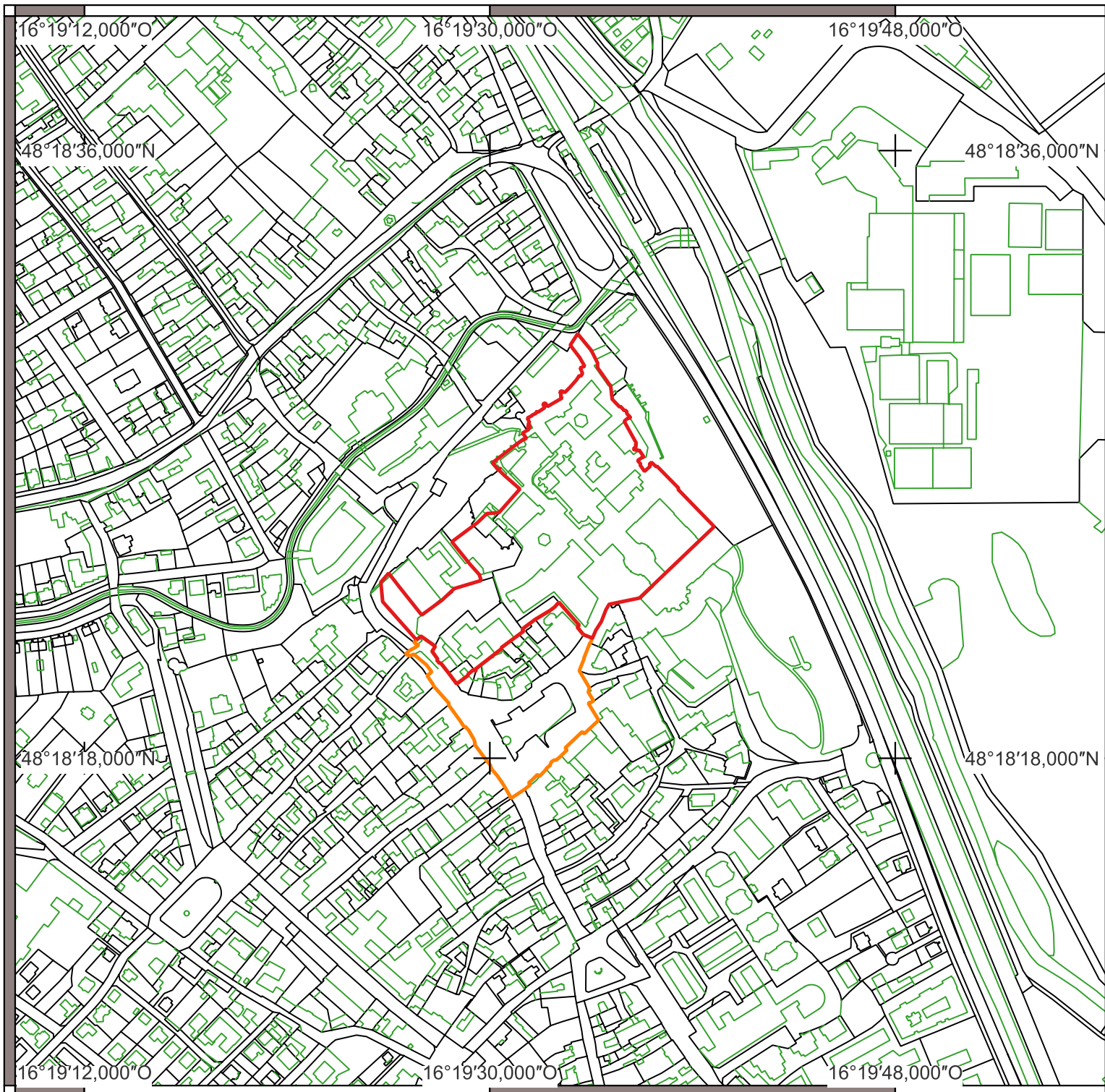
Area of the WH buffer zones (Austria):
1,065.83 ha

Scale (large map): 1:5,000

Coordinate system:
EPSG: 31259
MGI / Austria GK M34

Base map:
© Bundesamt für Eich- und Vermessungswesen (BEV), Digital Cadastral Map (DKM), CC-BY-4.0



Cartography:
schimek plant, DI Michael Schimek, MA
A-3430 Tulln



WORLD HERITAGE

Frontiers of the Roman Empire – The Danube Limes (Western Segment) (1608rev)

Klosterneuburg

-  Boundaries of the WH property
-  Buffer zones of the WH property

Area of the WH property (Austria):
711.74 ha

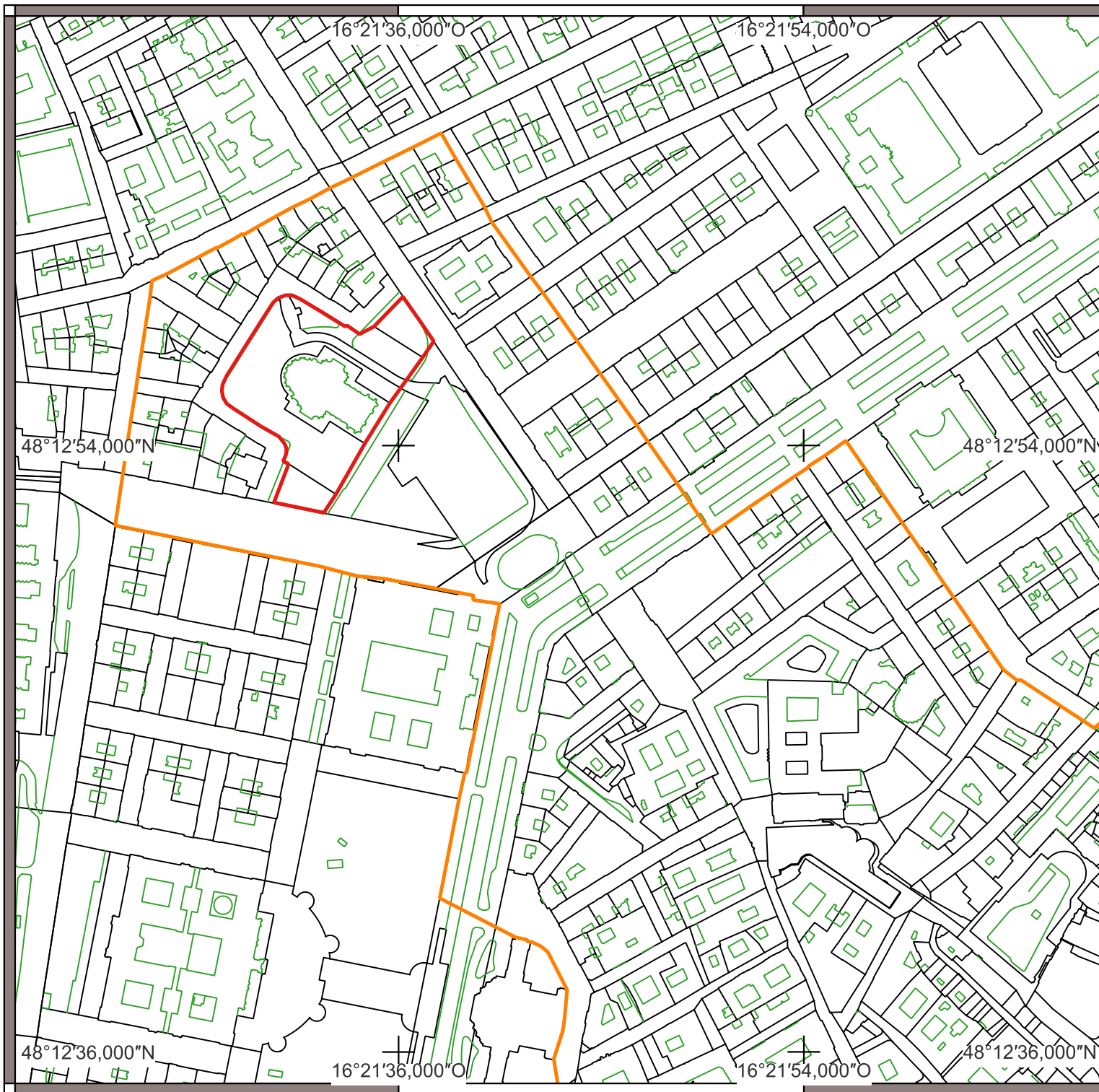
Area of the WH buffer zones (Austria):
1,065.83 ha

Scale (large map): 1:5,000

Coordinate system:
EPSG: 31259
MGI / Austria GK M34

Base map:
© Bundesamt für Eich- und Vermessungswesen (BEV), Digital Cadastral Map (DKM), CC-BY-4.0



Cartography:
schimek plant, DI Michael Schimek, MA
A-3430 Tulln



WORLD HERITAGE

Frontiers of the Roman Empire – The Danube Limes (Western Segment) (1608rev)

Wien 1/4

-  Boundaries of the WH property
-  Buffer zones of the WH property

Area of the WH property (Austria):
711.74 ha

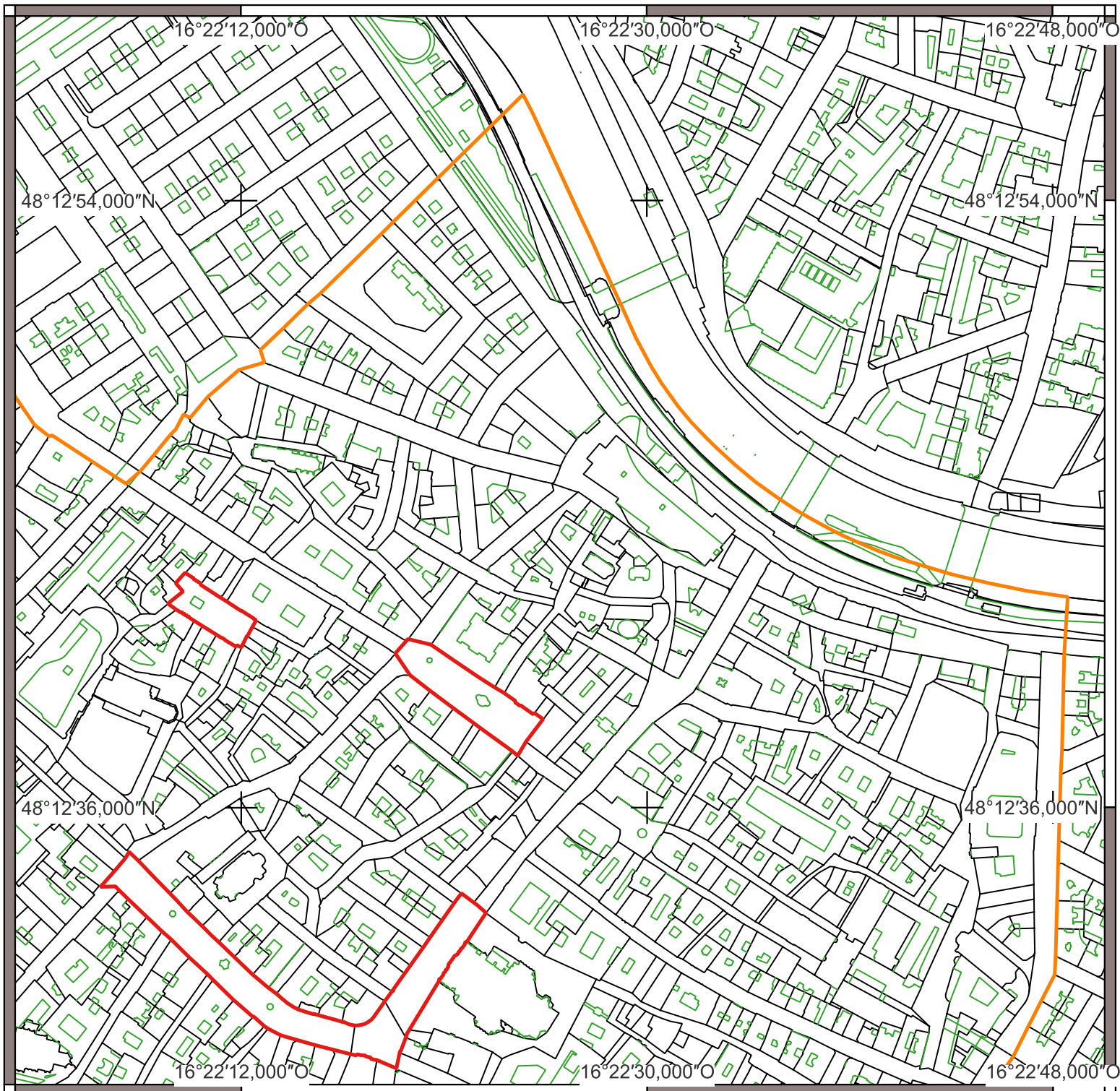
Area of the WH buffer zones (Austria):
1,065.83 ha

Scale (large map): 1:5,000

Coordinate system:
EPSG: 31259
MGI / Austria GK M34

Base map:
© Bundesamt für Eich- und Vermessungswesen (BEV), Digital Cadastral Map (DKM), CC-BY-4.0



Cartography:
schimek plant, DI Michael Schimek, MA
A-3430 Tulln



WORLD HERITAGE

Frontiers of the Roman Empire – The Danube Limes (Western Segment) (1608rev)

Wien 2/4

-  Boundaries of the WH property
-  Buffer zones of the WH property

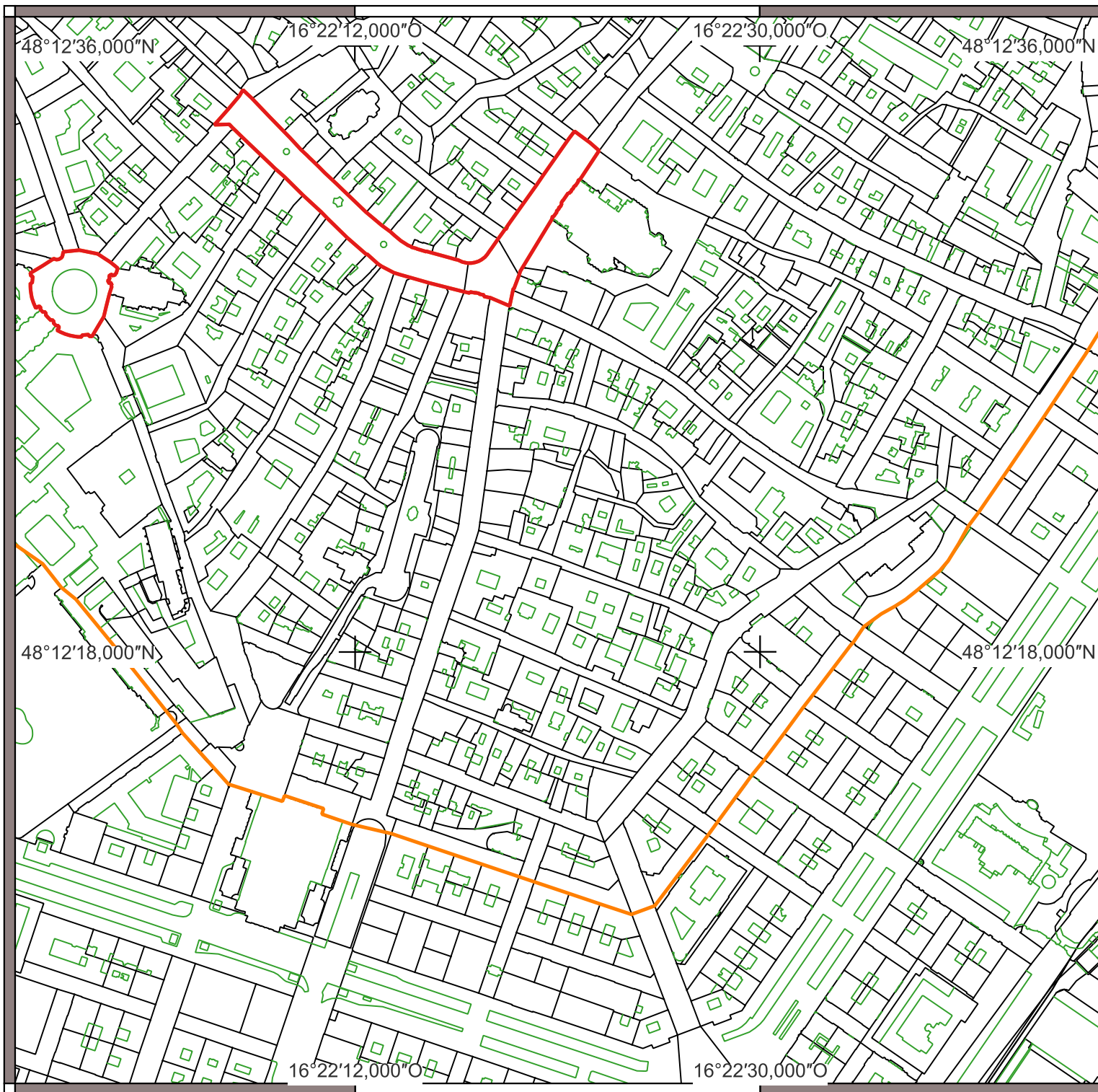
Area of the WH property (Austria):
711.74 ha
Area of the WH buffer zones (Austria):
1,065.83 ha

Scale (large map): 1:5,000

Coordinate system:
EPSG: 31259
MGI / Austria GK M34

Base map:
© Bundesamt für Eich- und Vermessungswesen (BEV), Digital Cadastral Map (DKM), CC-BY-4.0



Cartography:
schimek plant, DI Michael Schimek, MA
A-3430 Tulln



WORLD HERITAGE

Frontiers of the Roman Empire – The Danube Limes (Western Segment) (1608rev)

Wien 3/4

-  Boundaries of the WH property
-  Buffer zones of the WH property

Area of the WH property (Austria):
711.74 ha

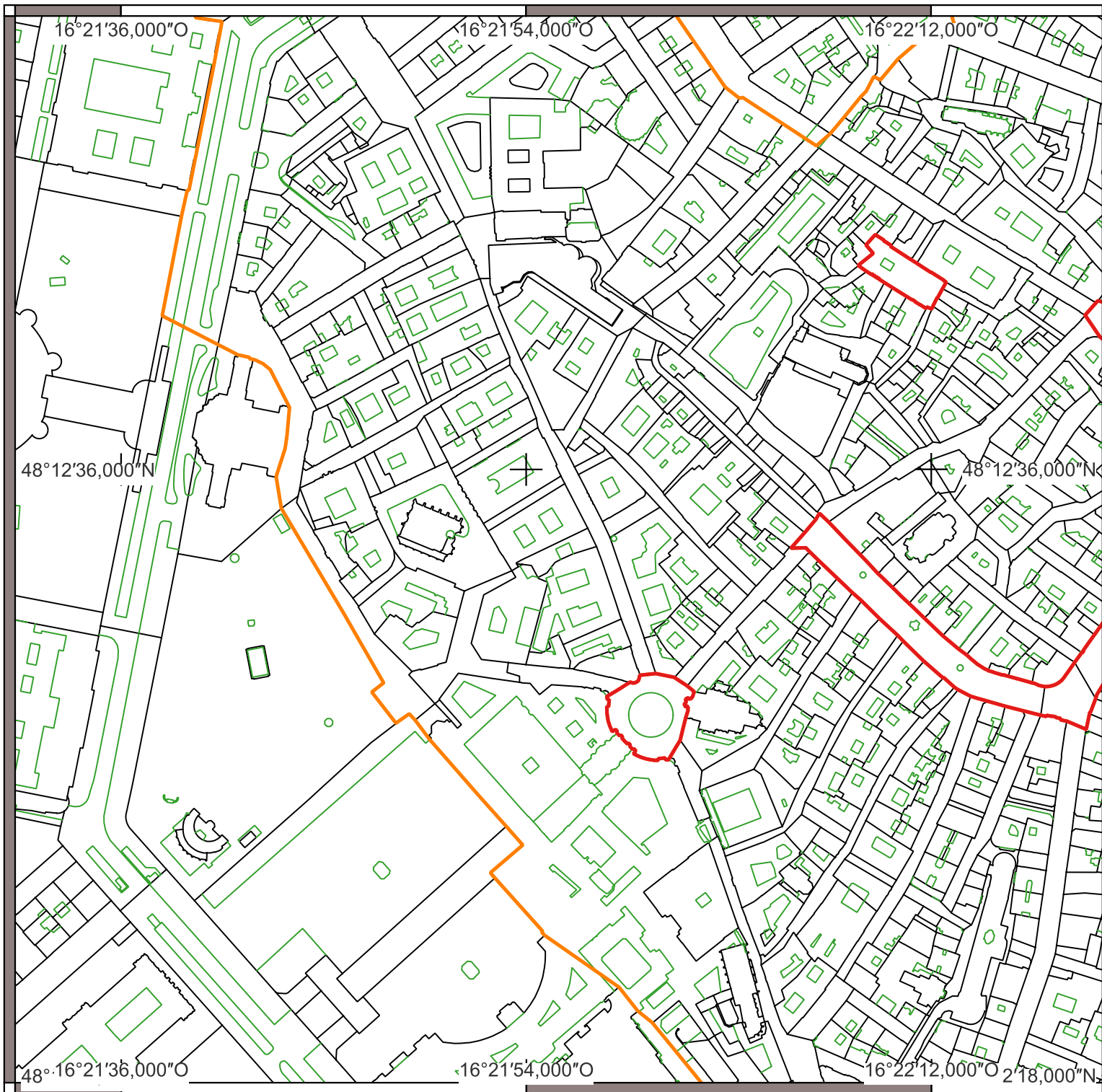
Area of the WH buffer zones (Austria):
1,065.83 ha

Scale (large map): 1:5,000

Coordinate system:
EPSG: 31259
MGI / Austria GK M34

Base map:
© Bundesamt für Eich- und Vermessungswesen (BEV), Digital Cadastral Map (DKM), CC-BY-4.0



Cartography:
schimek plant, DI Michael Schimek, MA
A-3430 Tulln



WORLD HERITAGE

Frontiers of the Roman Empire – The Danube Limes (Western Segment) (1608rev)

Wien 4/4

-  Boundaries of the WH property
-  Buffer zones of the WH property

Area of the WH property (Austria):
711.74 ha

Area of the WH buffer zones (Austria):
1,065.83 ha

Scale (large map): 1:5,000

Coordinate system:
EPSG: 31259
MGI / Austria GK M34

Base map:
© Bundesamt für Eich- und Vermessungswesen (BEV), Digital Cadastral Map (DKM), CC-BY-4.0

Cartography:
schimek plant, DI Michael Schimek, MA
A-3430 Tulln